

FLOW AIDS



THE WORLDWIDE LEADER IN VIBRATION TECHNOLOGY







Intro

Company profile	4
Why use flow aids?	6
Where use flow aids?	6
Product range	7

Internal applications

AERATORS	8
VBS - Bin aerators	9
VBS - External mounting kit	10
VBT - Tank truck aerators	11
I100 - Aeration pads	12
U - Aeration nozzles	13
AIR JET	14
PG - Air blasts	15

External applications

LINEAR PNEUMATIC VIBRATORS	16
PS - Single impact	17
P - Continuous impact	18
K - Cushioned	20
F - Adjustable cushioned	21
ROTARY PNEUMATIC VIBRATORS	22
S - Ball	23
OR - Roller	24
OT - Turbine	25
ELECTRIC VIBRATORS	26
MVE-MICRO - 2 poles	27
MVE - 2 poles	28
MVE-DC - Direct current	30
HYDRAULIC VIBRATORS	32
MVO	33



Worldwide leader in vibration technology

OLI is the world's top selling manufacturer of Electric and Pneumatic Vibrators.

A high level of customer service is guaranteed through 18 OLI Trading Subsidiaries, 36 local warehouses and 3 manufacturing plants worldwide.

OUR 3 DIVISIONS

PROVIDE CUSTOMERS WITH OPTIMAL SOLUTIONS FOR ALL REQUIREMENTS

INDUSTRIAL VIBRATORS



Electric motovibrators for vibrating equipments

FLOW AIDS



Comprehensive range of electric and pneumatic vibrators to solve any problem of flowability

CONCRETE CONSOLIDATION



Internal concrete vibrators and converters for reliable and efficient concrete compaction

Originally specialising in immersion vibrators for concrete consolidation, OLI is now the worldwide leader in vibration technology, with a **complete range of electric and pneumatic vibrators, as well as high frequency internal and external vibrators.**

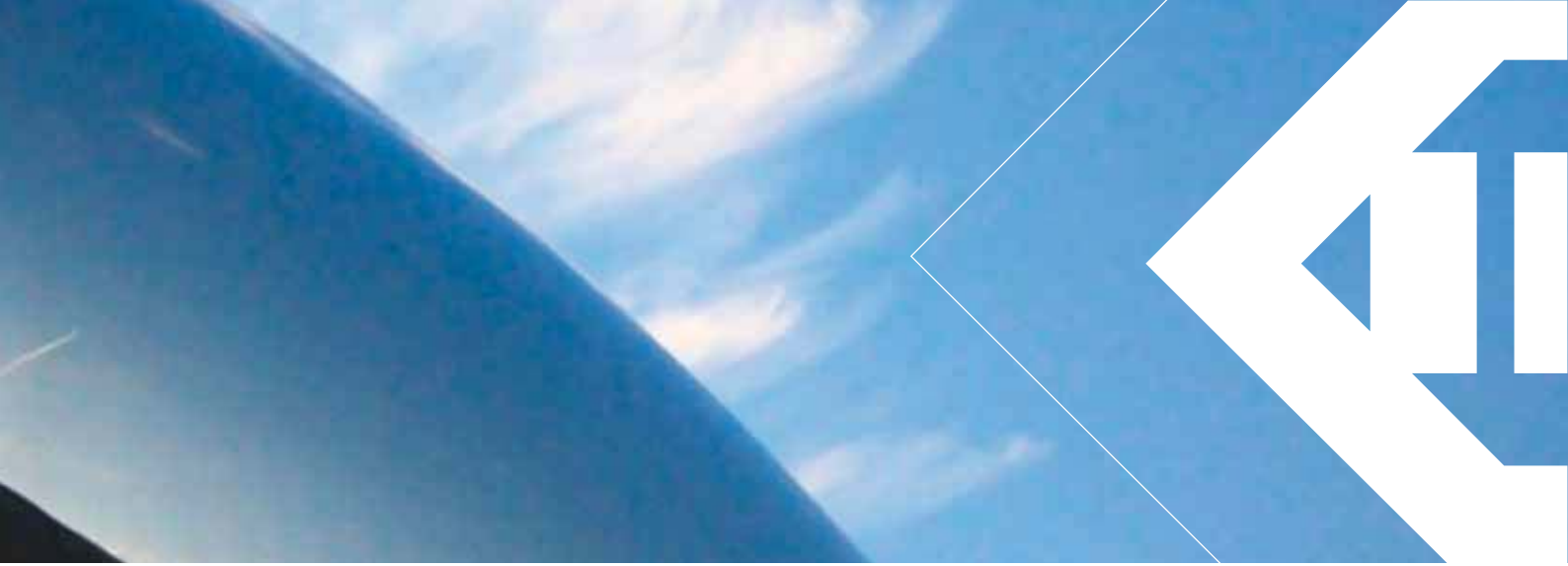
By supplying **competitive, high quality products for wide-ranging applications**, OLI combines **performance** and **reliability** by adapting to the ever-changing market. A strong believer in innovation, OLI is constantly striving to be ahead of the opposition.

As a global player in industrial vibration technology, the key focus of OLI's business strategy is **rapid stock delivery, any time, anywhere in the world.**

Excellent customer service is of pivotal importance: the company guarantees **quick order processing** and customers worldwide can enjoy access to the same high quality product and services.

OLI has access to credible expertise when it comes to finding suitable solutions to customers' requests. A team of engineers specialised in designing efficient, reliable and safe solutions backed by a **globally certified management.**

OLI provides their customers with state-of-the-art equipment and the blueprint for the next generation of products is already in progress.



SMART POWDER HANDLING

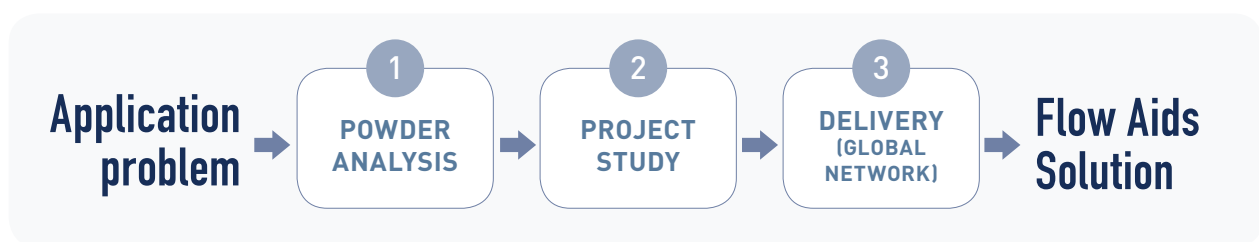
More than 50 years of **experience** in solving material handling problems make OLI the ideal partner for customers across all industries.

A **group of specialists** is at the customers' disposal to study and offer solutions that perfectly suit any type of application and material present on the market.

OLI analyses problems in the most comprehensive way: the type of powder to be handled, environmental conditions and the type of process. The **customer's needs** is at the centre of attention.

OLI's **global sales network** assists customers locally in over 50 countries ensuring ex-stock delivery from the local subsidiaries' warehouses.

OLI GUIDES YOU TO THE RIGHT CHOICE



ONLINE SIZING CALCULATOR

NOT TOO BIG, NOT TOO SMALL, JUST RIGHT

To complete the service to the customer, OLI has created an application that guides to the choice of the most suitable vibrator for the project, step-by-step.

OLIVIBRA CALCULATOR - MAIN FEATURES

- Available on-line
- Real-time updates
- Multilingual platform



WHY USE FLOW AIDS?

SITUATION

Due to their characteristics, many **powders** inside silos, hoppers, chutes, piping, tanks or any other container tend to **stick to the surface**.

PROBLEM

Any small change in the opening of the outlet, a rough surface, bends, shallow angles, the shape of the container, as well as the particle shape of the material handled might slow down the flow of the product, thus generating **waste**.

SOLUTION

OLI flow aids are designed to solve issues caused by design errors or by the characteristics of the powder or granules handled. Moreover, they **increase process efficiency** and **improve plant safety**.



WHERE USE FLOW AIDS?

Industries

- Food
- Animal feed
- Fertilizers
- Agriculture
- Pharmaceuticals
- Chemicals
- Plastics
- Cement
- Glass
- Air treatment
- Automotive
- Mining

Applications

- Silos
- Hoppers
- Slides and chutes
- Piping
- Threshers
- Dump trucks

Benefits

- ✓ Safe
- ✓ Economic
- ✓ Robust
- ✓ Reliable
- ✓ Easy to install
- ✓ High performance
- ✓ Global availability
- ✓ Increased productivity

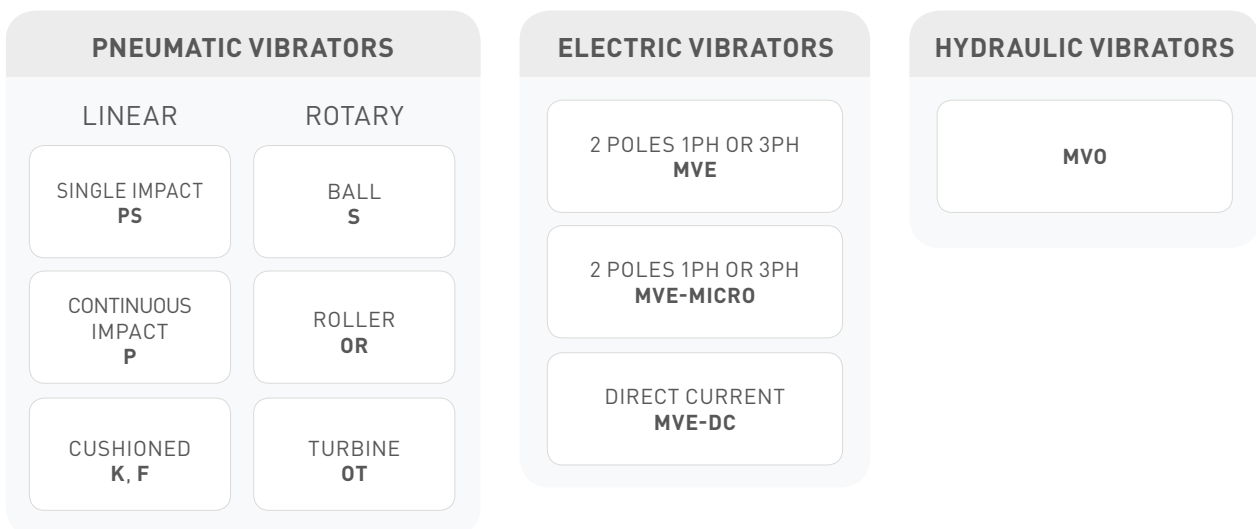


PRODUCT RANGE

INTERNAL APPLICATION → IN CONTACT WITH MATERIAL



EXTERNAL APPLICATION → NOT IN CONTACT WITH MATERIAL



INTERNAL APPLICATION

AERATORS

PRODUCT SERIES

BIN AERATORS
VB



APPLICATIONS

Silos
Hoppers
Pipes
Dry bulk tank trailers
Dry bulk rail tankers

POWDERS

Dry, fine powders.
Cement
Lime
Pigments
Plastics
Starch
Flour
Sugar
Coffee

FEATURES

Compatible with foods and chemicals.

BENEFITS

Economical
Easy to install
Efficient
Durable
Available in two sizes (MICRO or standard)
External mounting

AERATION PADS
I100



Silos
Hoppers

Dry, fine powders.
Suitable for cement, lime

Low air consumption (0.2 bar pressure).
Create fluid bed.

Economical
Easy to install
External mounting kit

AERATION NOZZLES
U



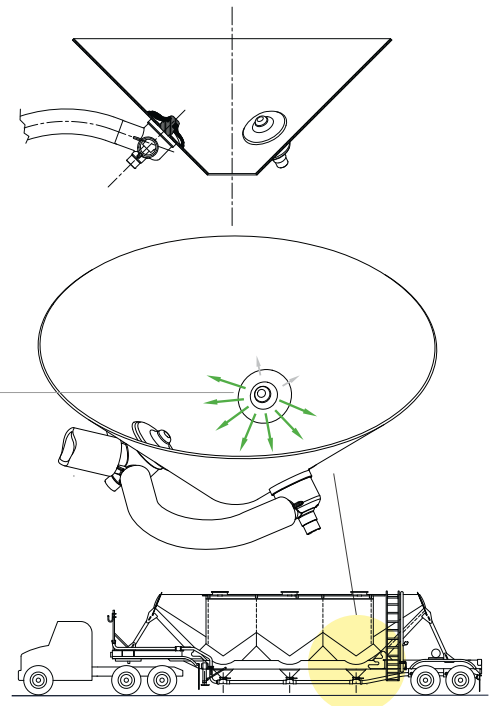
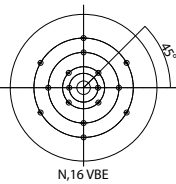
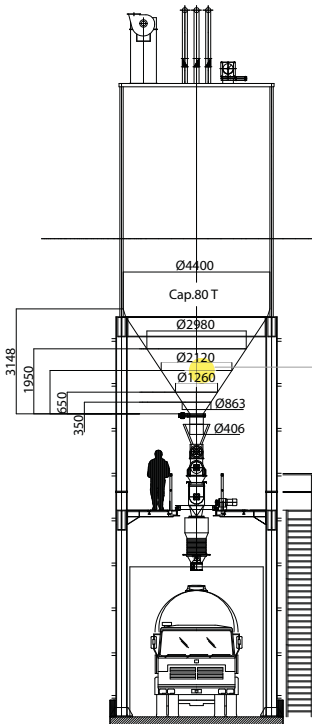
Silos
Hoppers

Dry, fine powders.
Suitable for cement, lime

Low air consumption (0.2-1 bar pressure).
Create fluid bed.

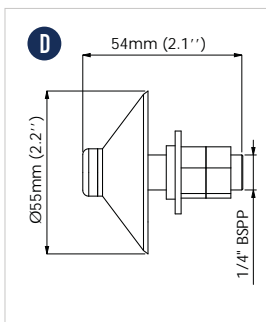
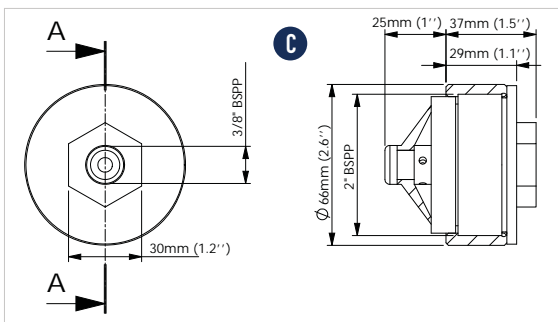
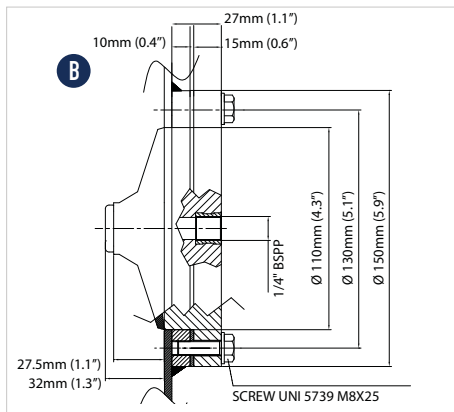
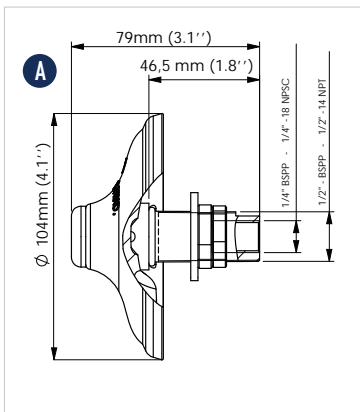
Economical
Easy to install
Compact design
Suitable for retrofitting
External mounting

APPLICATIONS





VBS - Bin aerators



MODEL	DRAWING	MEMBRANE COLOUR	STEM MATERIAL	AIR CONSUMPTION								WORKING TEMPERATURE			
				0.8 bar (11.6 psi)		2 bar (29 psi)		4 bar (58 psi)		6 bar (87 psi)		°C		°F	
				l/min*	Cfm	l/min*	Cfm	l/min*	Cfm	l/min*	Cfm	Min.	Max.	Min.	Max.
VBS	A	White	Aluminium	600	21.1	800	28.2	950	33.5	1150	40.6	-40	170	-40	338
VBSI	A	White	Stainless steel	600	21.1	800	28.2	950	33.5	1150	40.6	-40	170	-40	338
VBSIHT	A	Red	Stainless steel	600	21.1	800	28.2	950	33.5	1150	40.6	-40	235	-40	455
VBSIMD	A	Blue	Stainless steel	600	21.1	800	28.2	950	33.5	1150	40.6	-40	170	-40	338
VBE	B	White	Nylon	-	-	100	3.53	150	5.29	250	8.82	-40	80	-40	176
VBSME	C	White	Nylon	130	4.6	150	5.3	-	-	-	-	-40	80	-40	176
VBSM	D	White	Aluminium	150	5.3	200	7.1	-	-	-	-	-40	170	-40	338
VBSMI	D	White	Stainless steel	150	5.3	200	7.1	-	-	-	-	-40	170	-40	338
VBSMIHT	D	Red	Stainless steel	150	5.3	200	7.1	-	-	-	-	-40	235	-40	455
VBSMIMD	D	Blue	Stainless steel	150	5.3	200	7.1	-	-	-	-	-40	170	-40	338

* Indicates in l/min the total air consumption normalized at the rated pressure.

VBS - BIN AERATORS

APPLICATION	Silos, hoppers, pipes
POWDER	Dry, fine, granular
PROBLEM SOLVING	Bridge and rat-holing

FEATURES

DUTY CYCLE	Continuous or discontinuous
WORKING PRESSURE	From 0.8 bar to 6 bar (from 12 psi to 87 psi) - Suggested: 4 bar (58 psi) VBSMicro: from 0.8 bar to 2 bar (from 12 psi to 29 psi)
PNEUMATIC CIRCUIT	Filter + flow control valve
AIR SUPPLY QUALITY	Non-Lubricated (Class. 5.4.1)
TECHNOLOGY	Vibro-Aerator
MATERIAL	Silicone membrane [food grade] - FDA 177.2600 Aluminium / stainless steel stem [Food & Pharmaceutical grade] Nylon body with steel ring [VBSE]

OPTIONS

EXTERNAL MOUNTING KIT	Stainless steel rectangular plate and fitting bracket
-----------------------	---

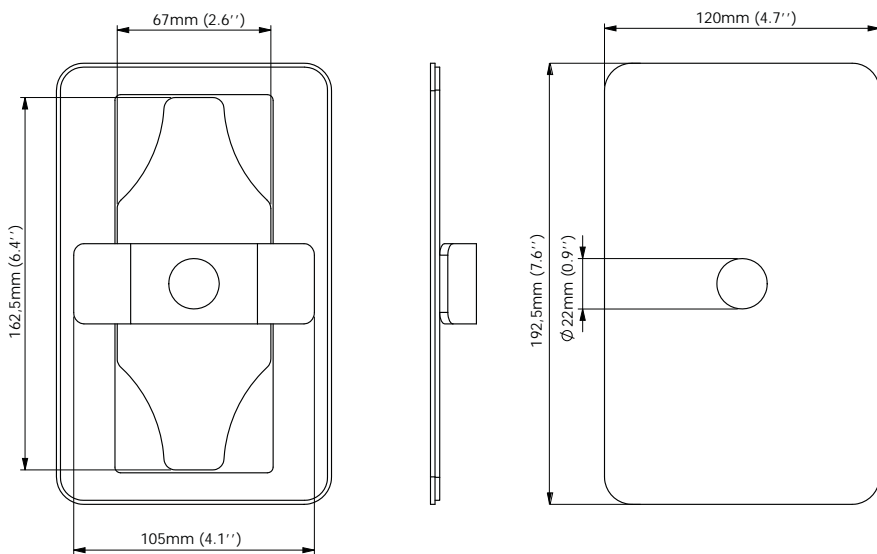
This information is furnished without warranty, representation, inducement or license of any kind. It is accurate to the best OLI knowledge or is obtained from sources believed to be accurate. OLI therefore assumes no legal responsibility. The latest and most updated information are available online.



VBS - External mounting kit

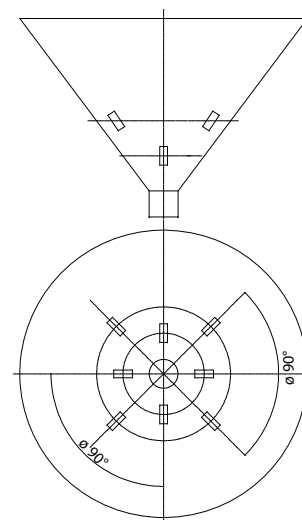
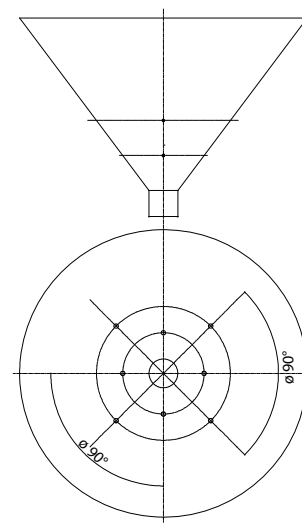


*** THE VBS IS NOT INCLUDED IN THE EXTERNAL MOUNTING KIT**

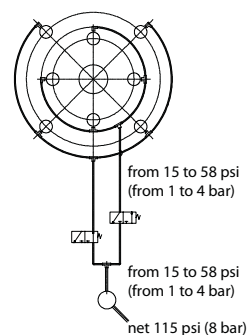


EXTERNAL MOUNTING KIT

PROBLEM SOLVING	Allows the installation on silos that are difficult to reach from the inside
MATERIAL	Stainless steel rectangular plate
SIZE	120 x 192.5 mm [4.72" x 7.58"]
CUT OUT SIZE	67 x 162.5 mm [2.64" x 6.40"]



FLUIDIZER PNEUMATIC CIRCUITS

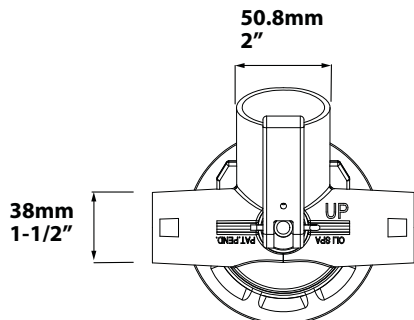
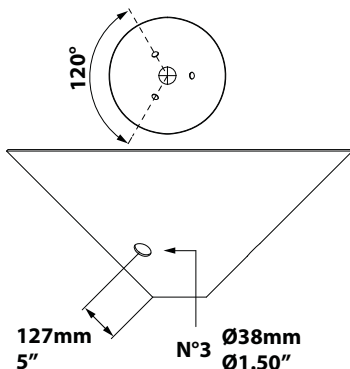


This information is furnished without warranty, representation, inducement or license of any kind. It is accurate to the best OLI knowledge or is obtained from sources believed to be accurate. OLI therefore assumes no legal responsibility. The latest and most updated information are available online.

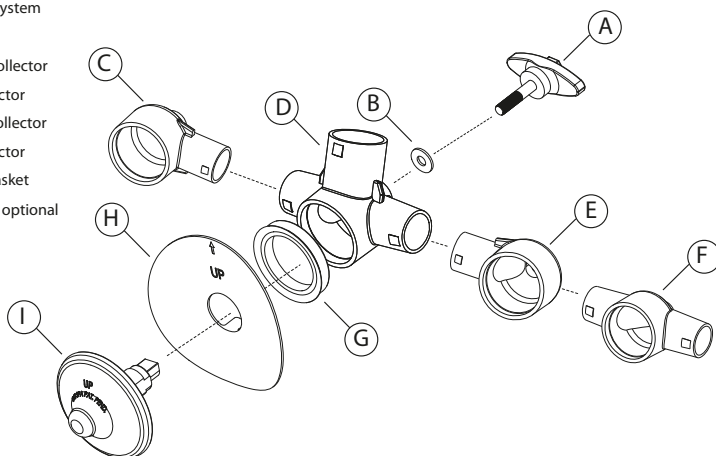




VBT - Tank truck aerators



- (A) T-handle lock system
- (B) Gasket
- (C) RH 1-Way air collector
- (D) 3-Way air collector
- (E) LH 1-Way air collector
- (F) 2-Way air collector
- (G) Air collector gasket
- (H) Hopper saver - optional
- (I) Membrane



VBT SERIES

APPLICATION	Dry bulk tank trailer, rail tanker
POWDER	Dry, fine, granular
PROBLEM SOLVING	Bridging and rat-holing

FEATURES

DUTY CYCLE	Continuous (suitable to be used with blower)
WORKING PRESSURE	From 0.7 bar to 2 bar (from 10 psi to 29 psi)
PNEUMATIC CIRCUIT	Suitable standard pneumatic bulk trailer, works with all standard designs
WORKING TEMPERATURE	From -40 °C to 170 °C (from -40 °F to 340 °F)
TECHNOLOGY	Vibro-aeration
MATERIAL	Blue silicone membrane: metal detectable, comply with FDA 177.2600 Stem - Black polyarylamide glass-fiber reinforced comply with 10/2011/EC - FDA - UL94 Manifold - Black polyarylamide glass-fiber reinforced comply with 10/2011/EC - FDA - UL94 Manifold - Transparent material comply with ISO 10993 - FDA 21 CFR 177.1655 - NSF 51 - UL94 Lever and T-handle - Black polyarylamide glass-fiber reinforced / Stainless steel thread shaft Silicone gasket

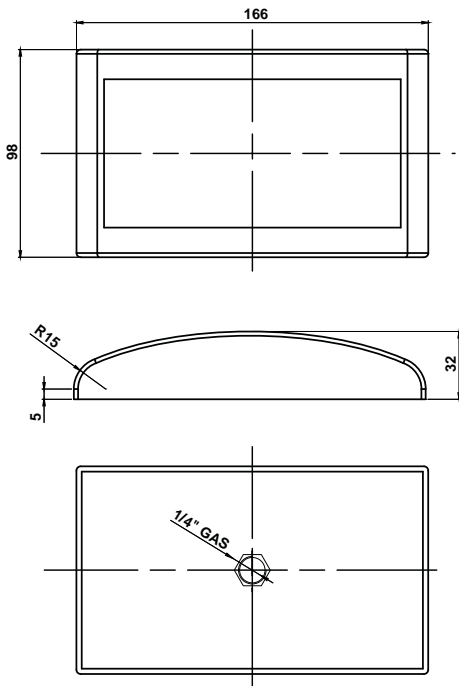
OPTIONS

HOPPER SAVER PLATE	Stainless steel
--------------------	-----------------

This information is furnished without warranty, representation, inducement or license of any kind. It is accurate to the best OLI knowledge or is obtained from sources believed to be accurate. OLI therefore assumes no legal responsibility. The latest and most updated information are available online.



I100 - Aeration pads



MODEL	AIR CONSUMPTION	
	0.2 bar (2.9 psi)	
	l/min*	cfm
I100	2	0.07

* Indicates in l/min the total air consumption normalized at the rated pressure.

I100 - AERATION PADS

APPLICATION	Hopper and silo
POWDER	Fine and dust (cement and lime)
PROBLEM SOLVING	Bridge and rat-holing

FEATURES

DUTY CYCLE	Continuous
WORKING PRESSURE	0.2 bar (2.9 psi)
PNEUMATIC CIRCUIT	Filter + flow control valve
AIR SUPPLY QUALITY	Class 5.4.1.
WORKING TEMPERATURE	From -20 °C to 80 °C (from -4 °F to 176 °F)
TECHNOLOGY	Fluidification
MATERIAL	Sintered PET filter, PS body

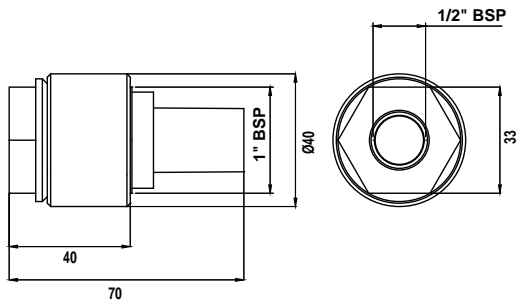
This information is furnished without warranty, representation, inducement or license of any kind. It is accurate to the best OLI knowledge or is obtained from sources believed to be accurate. OLI therefore assumes no legal responsibility. The latest and most updated information are available online.



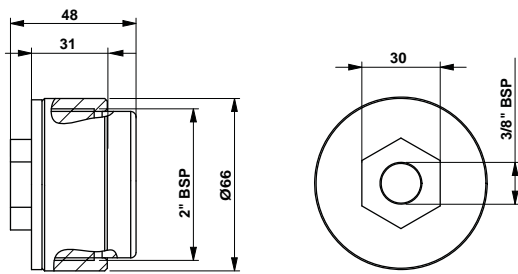


U - Aeration nozzles

A



B



MODEL	DRAWINGS	AIR CONSUMPTION			
		0.2 bar (2.9 psi)		1 bar (14 psi)	
		l/min*	Cfm	l/min*	Cfm
U025	A	0.83	0.03	-	-
U060	B	-	-	30	1.1

* With l/min we indicate NI/min so the air consumption normalized at the rated pressure.

U060 have been tested up to 3 bar in our R&D Dept. showing an air consumption of 120 l/m at 3 bar. Based on application and working condition a lower pressure is always preferable.

U - AERATION NOZZLES

APPLICATION	Hopper and silo - piping
POWDER	Fine and dust (cement and lime)
PROBLEM SOLVING	Bridge and rat-holing

FEATURES

DUTY CYCLE	Continuous
WORKING PRESSURE	From 0.2 bar to 1 bar (from 2.9 psi to 14 psi)
PNEUMATIC CIRCUIT	Filter + flow control valve
AIR SUPPLY QUALITY	Class 5.4.1
WORKING TEMPERATURE	From -20 °C to 80 °C (from -4 °F to 176 °F)
TECHNOLOGY	Fluidification
MATERIAL	U060 - ring carbon steel, sintered PE filter, Nylon (UV resistant) body U025 - ring carbon steel, sintered brass filter, Nylon (UV resistant) body

This information is furnished without warranty, representation, inducement or license of any kind. It is accurate to the best OLI knowledge or is obtained from sources believed to be accurate. OLI therefore assumes no legal responsibility. The latest and most updated information are available online.

INTERNAL APPLICATION

AIR JET

PRODUCT SERIES

Air cannon
PG



APPLICATIONS

Silos
Hoppers

POWDERS

Powders of large particle size and irregular shape; fibrous powders and flakes

Wood fibres
Textile fibres
Paper
Plastics
Bran

FEATURES

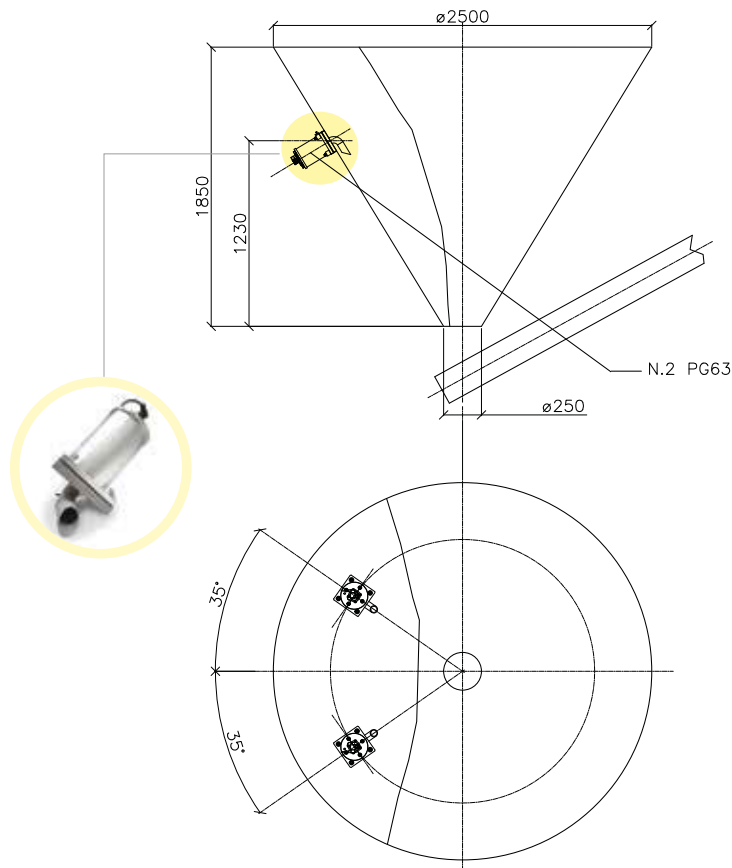
Compact design with integrated solenoid valve.

The air blade generated by the high pressure jet helps to clean the hopper surface.

BENEFITS

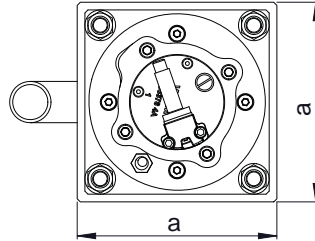
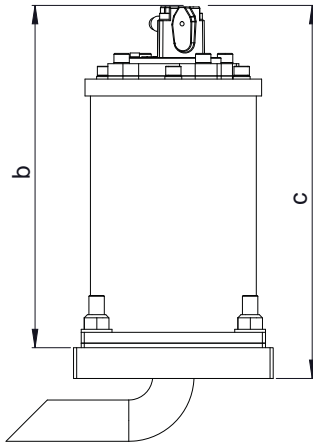
Suitable for bridge breaking
Economical
Easy to install
Low air consumption
Mounting plate included

APPLICATIONS





PG - Cannon



MODEL	AIR CONSUMPTION (NI)				I Ø PIPE		AIR INLET	DIMENSIONAL SPECIFICATIONS							
	3 bar	43 psi	6 bar	87 psi	mm	in	BSPP	A		B		C		WEIGHT	
	mm	in	mm	in	mm	in	mm	in	mm	in	mm	in	Kg	lb	
PG 40	3.6	52.2	5.3	50.7	6	0.2	1/8" BSPP	130	5.12	220	8.66	243	9.57	6.8	14.99
PG 63	6.4	66.7	11.6	88.6	8	0.3	1/4" BSPP	160	6.30	260	10.24	283	11.14	13.0	28.66
PG 80	12.5	181.2	21	174	8	0.3	1/4" BSPP	200	7.87	308	12.13	336	13.23	22.5	49.60

PG - CANNON

APPLICATION Hopper and silo

POWDER Large size, irregular shape, fibrous dust and flakes

PROBLEM SOLVING Bridge and rat-holing

FEATURES

DUTY CYCLE Discontinuous

WORKING PRESSURE From 3 bar to 6 bar (from 43 psi to 87 psi)

PNEUMATIC CIRCUIT Filter + flow control valve

AIR SUPPLY QUALITY Class 5.4.1.

WORKING TEMPERATURE From -20 °C to 80 °C (from -4 °F to 176 °F)

MAX NOISE LEVEL 105 dB (a)

TECHNOLOGY High pressure jet

MATERIAL Steel body and plate, PS040-063 nylon (PS080 aluminium) head

OPTIONS

TIMER Adjustable from 30 sec to 45 min





MULTI-TENSION COILS From 24v (Ac/Dc) to 230v

FULLY PNEUMATIC KIT Available

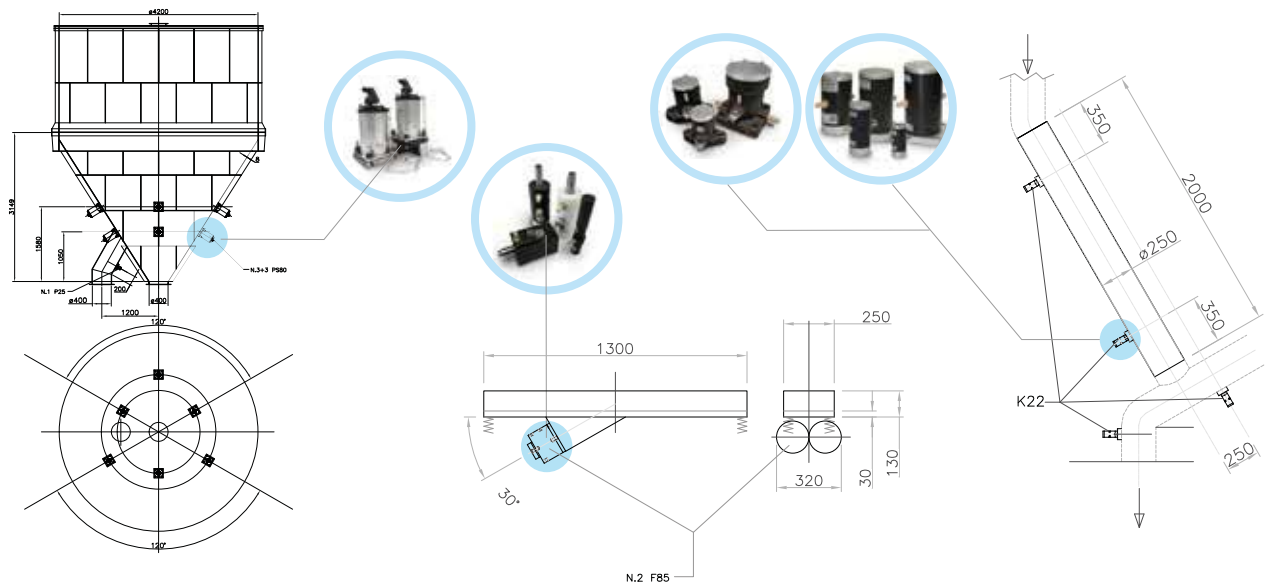
This information is furnished without warranty, representation, inducement or license of any kind. It is accurate to the best OLI knowledge or is obtained from sources believed to be accurate. OLI therefore assumes no legal responsibility. The latest and most updated information are available online.

EXTERNAL APPLICATION

LINEAR PNEUMATIC VIBRATORS

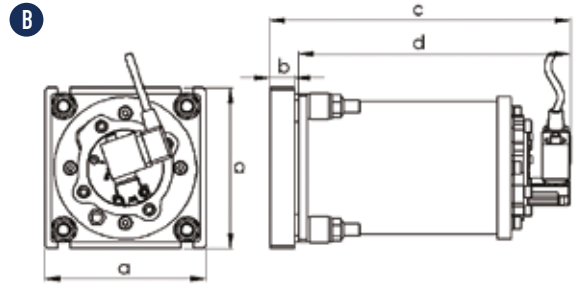
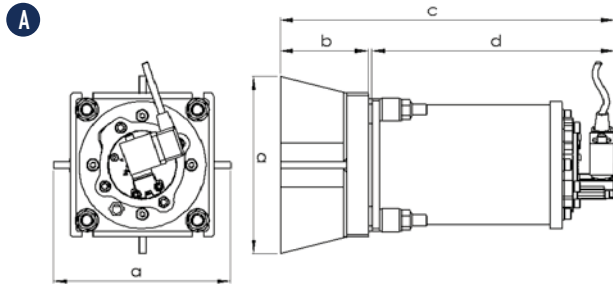
PRODUCT SERIES	APPLICATIONS	POWDERS	FEATURES	BENEFITS
SINGLE IMPACT - MARTSHOCK PS 	Silos Storage systems Hoppers	Hygroscopic powders Flour Detergents Phosphates Fertilizers Lime Cement Clay Pigments	High impact strength solves bridging or rat holing problems. Atex II3D c T85 °C (pneumatic only).	Economical Low air consumption Efficient Zero impact on silo structure Multi-voltage Integrated solenoid valve Timer
CONTINUOUS IMPACT P 	Silos Hoppers Piping Salt spreaders Dump trucks Rail cars	Hygroscopic, humid powders Sludge Aggregates Sand Salt Foundry sand Animal feed	Sturdy, compact heavy-duty design, high temperature applications. Atex II2G c Tx Atex II2D c Tx.	Economical Low air consumption Efficient Suitable for high temperature and outdoor applications
CUSHIONED K 	Silos Hoppers Piping Tanks Compacting Vibrating feeders, tables and channels	Hygroscopic or dusty powders, granules Animal feed Aggregates Plastics Foods	Suitable for food or chemical applications Suitable for dusty environments. Atex II2G c Tx Atex II2D c Tx	Economical Silent Low air consumption Easy to install
ADJUSTABLE CUSHIONED F 	Hoppers Chutes Vibrating feeders, Tables and channels	Hygroscopic or dusty powders; granules	Alternative option to K. Compact design. Available in different shapes and casing materials. Threaded shaft for amplitude and force adjustment. Atex II2G c Tx Atex II2D c Tx	Economical Silent Low air consumption Easy to install Adjustable force and vibration frequency

APPLICATIONS





PS - Linear pneumatic vibrators - Single impact



DIMENSIONAL SPECIFICATIONS - PS TYPE "A" [≤ 3mm HOPPER THICKNESS]										
MODEL	A		B		C		D		WEIGHT	
	mm	in	mm	in	mm	in	mm	in	Kg	lb
PS 40	160	6.3	80	3.1	302	11.9	219	8.6	8.0	17.6
PS 63	200	7.9	95	3.7	357	14.0	259	10.2	16.5	36.4
PS 80	250	9.8	119	4.7	430	16.9	308	12.1	31.5	69.4

DIMENSIONAL SPECIFICATIONS - PS TYPE "B" [> 3mm HOPPER THICKNESS]										
MODEL	A		B		C		D		WEIGHT	
	mm	in	mm	in	mm	in	mm	in	Kg	lb
PS 40	130	5.1	20	0.7	242	9.5	219	8.6	7.4	16.3
PS 63	163	6.4	20	0.7	282	11.1	259	10.2	14.4	31.7
PS 80	200	7.9	25	1.0	336	13.2	308	12.1	26.2	57.8



MODEL	3 bar						6 bar						I Ø PIPE		AIR INLET
	ENERGY		FORCE		AIR CONSUMPTION		ENERGY		FORCE		AIR CONSUMPTION				
	J	lbf/in	N	lb	l/min	Cfm	J	lbf/in	N	lb	l/min	Cfm	mm	in	BSPP
PS 40	8.4	74.3	199	44.7	3.6	0.1	18.1	160.2	429	96.4	5.3	0.1	6	0.2	1/8" BSPP
PS 63	28.8	254.9	589	132.4	6.4	0.2	62.0	548.7	1268	285.0	11.6	0.4	8	0.3	1/4" BSPP
PS 80	59.2	523.9	846	190.1	12.5	0.4	153.0	1354	2186	491.4	21.0	0.7	8	0.3	1/4" BSPP

PS - LINEAR PNEUMATIC VIBRATORS - SINGLE IMPACT

APPLICATION	Hopper and silo
POWDER	Hygroscopic
PROBLEM SOLVING	Bridge and rat-holing

FEATURES

DUTY CYCLE	Discontinuous
WORKING PRESSURE	From 3 bar to 6 bar (from 43 psi to 87 psi)
PNEUMATIC CIRCUIT	Filter + flow control valve
AIR SUPPLY QUALITY	Class 5.4.1.
WORKING TEMPERATURE	From -20 °C to 80 °C (from -4 °F to 176 °F)
MAX NOISE LEVEL	125 dB(a)
TECHNOLOGY	Single impact
MATERIAL	Steel body, steel attachment plate, PS040-063 nylon (PS080 aluminium) head

OPTIONS

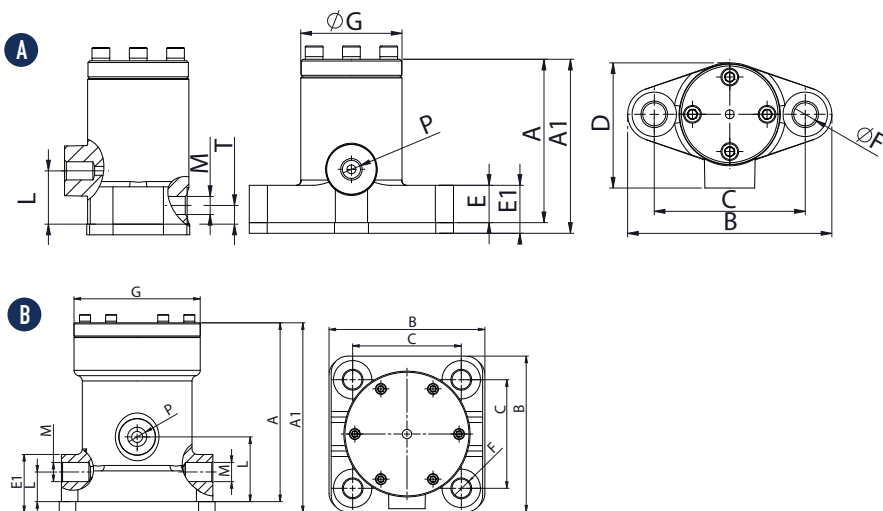
KIT ATEX	II 3D c T85 °C - PP plate, technothane tablet
TIMER	Adjustable from 30 sec to 45 min
MULTI-TENSION COILS	From 24V (ac/dc) to 230V
FULLY PNEUMATIC KIT	Available
STAINLESS STEEL PLATE TYPE B	Available

This information is furnished without warranty, representation, inducement or license of any kind. It is accurate to the best OLI knowledge or is obtained from sources believed to be accurate. OLI therefore assumes no legal responsibility. The latest and most updated information are available online.





P - Linear pneumatic vibrators - Continuous impact



DIMENSIONAL SPECIFICATIONS																															
MODEL	DRAW.	A		A1		B		C		D		E		E1		F		G		H		P		L		M		N		WEIGHT	
		mm	in	mm	in	mm	in	mm	in	mm	in	mm	in	mm	in	mm	in	mm	in	mm	in	IN BSPP	mm	in	OUT BSPP	mm	in	kg	lb		
P25	A	92	3.6	98	3.9	115	4.5	85	3.3	70	2.8	21	0.8	27	1.1	13	0.5	58	2.3	30	1.2	1/4"	10	0.4	1/4"	25	1.0	2.2	4.9		
P40	A	121	4.8	127	5.0	148	5.8	110	4.3	91	3.6	25	1.0	31	1.2	17	0.7	75	3.0	45	1.8	3/8"	16	0.6	3/8"	35	1.4	4.5	9.9		
P60	B	163	6.4	173	6.4	138x142	5.4x5.5	99x99	3.9x3.9	125	4.9	28	1.1	38	1.5	17	0.7	115	4.5	60	2.4	1/2"	27	1.1	2x1/2"	60	2.4	11	24.3		

MODEL	2 bar (29 psi)								4 bar (58 psi)								6 bar (87 psi)							
	VIBRA-TION		FORCE		WORKING MOMENT		AIR CONSUMP.		VIBRA-TION		FORCE		WORKING MOMENT		AIR CONSUMP.		VIBRA-TION		FORCE		WORKING MOMENT		AIR CONSUMP.	
	V/min*	N	lb	kgcm	inlb	l/min*	Cfm	V/min	N	lb	kgcm	inlb	l/min*	Cfm	V/min	N	lb	kgcm	inlb	l/min*	Cfm			
P25	2500	294	66	0.43	0.37	55	1.9	3800	680	153	0.43	0.37	80	2.8	4500	954	214	0.43	0.37	125	4.4			
P40	1650	484	109	1.63	1.41	70	2.5	2200	860	193	1.63	1.41	120	4.2	2800	1396	314	1.63	1.41	150	5.3			
P60	1200	1296	291	4.11	3.57	100	3.5	1600	2304	518	4.11	3.57	250	8.8	1900	3250	731	4.11	3.57	300	10.6			

* Indicates in l/min the total air consumption normalized at the rated pressure.

P - LINEAR PNEUMATIC VIBRATORS - CONTINUOUS IMPACT

APPLICATION	Hopper silo - salt spreader - dump trailer - rail cart
POWDER	Hygroscopic - humid - sticky
PROBLEM SOLVING	Bridge and rat-holing

FEATURES

DUTY CYCLE	Continuous
WORKING PRESSURE	From 2 bar to 6 bar (from 29 psi to 87 psi)
PNEUMATIC CIRCUIT	Filter + flow control valve + lubrication + 3/2 ways valve
AIR SUPPLY QUALITY	Class 5.4.4.
WORKING TEMPERATURE	From -20 °C to +200 °C (from -4 °F to +392 °F) without ATEX Kit From -20 °C to +110 °C (from -4 °F to +230 °F) with ATEX Kit
MAX NOISE LEVEL	100 dB(a)
TECHNOLOGY	Piston pneumatic impact
MATERIAL	Grey cast iron body (powder painted) - aluminium cover

OPTIONS

KIT ATEX	II 2D C TX II 2G C TX
SAFETY CHAIN	Available

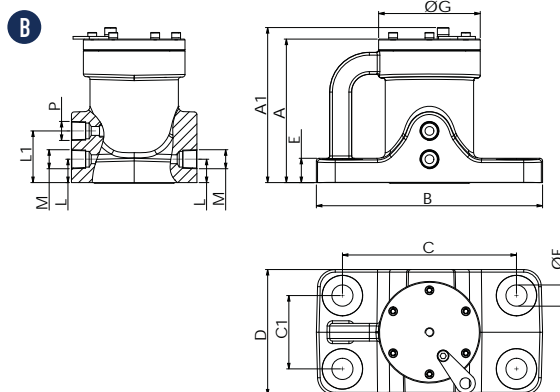
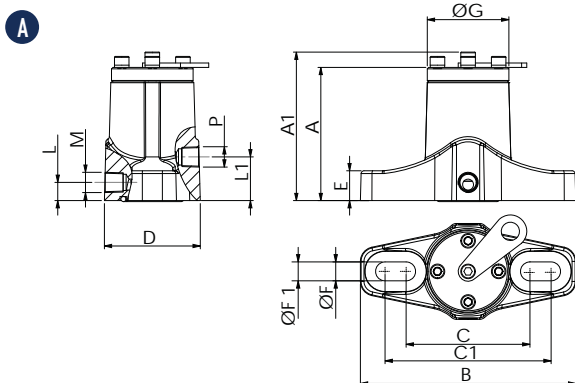
This information is furnished without warranty, representation, inducement or license of any kind. It is accurate to the best OLI knowledge or is obtained from sources believed to be accurate. OLI therefore assumes no legal responsibility. The latest and most updated information are available online.





P-US - Linear pneumatic vibrators - Continuous impact

COMPATIBLE WITH MOST COMMON US FOOT PRINT



DIMENSIONAL SPECIFICATIONS

MODEL	DRAW.	A		A1		B		C		C1		D		E		ØF		ØF1		ØG		P	L		L1		M		WEIGHT	
		mm	in	mm	in	mm	in	mm	in	mm	in	mm	in	mm	in	mm	in	mm	in	mm	in	IN NPT	mm	in	mm	in	OUT NPT	kg	lb	
P10 R	A	92	3.6	102	4.0	148	5.8	85	3.3	114	4.5	66	2.6	21	0.8	13	0.5	/	/	56	2.2	1/4"	30.	1.2	13	0.5	1/4"	2.2	4.9	
P20 R	A	121	4.7	134	5.2	234	9.1	110	4.3	191	7.5	96	3.7	25	1.0	19	0.7	17	0.7	75	2.9	3/8"	45	1.7	19	0.7	3/8"	5.5	12.1	
P30 R	A	163	6.3	176	6.8	235	9.2	153	6.0	190	7.4	130	5.1	28	1.1	16	0.6	/	/	115	4.5	1/2"	59	2.3	27	1.0	1/2"	11.0	24.3	
P30 S	B	163	6.3	176	6.8	256	10.0	197	7.7	83	3.2	142	5.5	28	1.1	24	0.9	/	/	115	4.5	1/2"	59	2.3	27	1.0	1/2"	14.0	30.9	

MODEL	2 bar (29 psi)								4 bar (58 psi)								6 bar (87 psi)							
	VIBRATION		FORCE		WORKING MOMENT		AIR CONSUMP.		VIBRATION		FORCE		WORKING MOMENT		AIR CONSUMP.		VIBRATION		FORCE		WORKING MOMENT		AIR CONSUMP.	
	V/min	N	lb	kgcm	inlb	l/min*	Cfm	V/min	N	lb	kgcm	inlb	l/min*	Cfm	V/min	N	lb	kgcm	inlb	l/min*	Cfm			
P10 R	2500	294	66	0.43	0.37	55	1.9	3800	680	153	0.43	0.37	80	2.8	4500	954	214	0.43	0.37	200	7.1			
P20 R	1650	484	109	1.63	1.41	70	1.1	2200	860	193	1.63	1.41	120	4.2	2800	1396	314	1.63	1.41	250	8.8			
P30 R	1200	1296	291	4.11	3.57	100	3.5	1600	2304	518	4.11	3.57	250	8.8	1900	3250	731	4.11	3.57	400	14.1			
P30 S	1200	1296	291	4.11	3.57	100	3.5	1600	2304	518	4.11	3.57	250	8.8	1900	3250	731	4.11	3.57	400	14.1			

* Indicates in l/min the total air consumption normalized at the rated pressure.

P-US - LINEAR PNEUMATIC VIBRATORS - CONTINUOUS IMPACT

APPLICATION	Hopper silo - salt spreader - dump trailer - rail cart
POWDER	Hygroscopic - humid - sticky
PROBLEM SOLVING	Bridge and rat-holing

FEATURES

DUTY CYCLE	Continuous
WORKING PRESSURE	From 2 bar to 6 bar (from 29 psi to 87 psi)
PNEUMATIC CIRCUIT	Filter + flow control valve + lubrication + 3/2 ways valve
AIR SUPPLY QUALITY	Class 5.4.4.
WORKING TEMPERATURE	From -20 °C to 200 °C (from -4 °F to 392 °F)
MAX NOISE LEVEL	100 dB(a)
TECHNOLOGY	Piston pneumatic impact
MATERIAL	Grey cast iron body (powder painted) - aluminium cover

OPTIONS

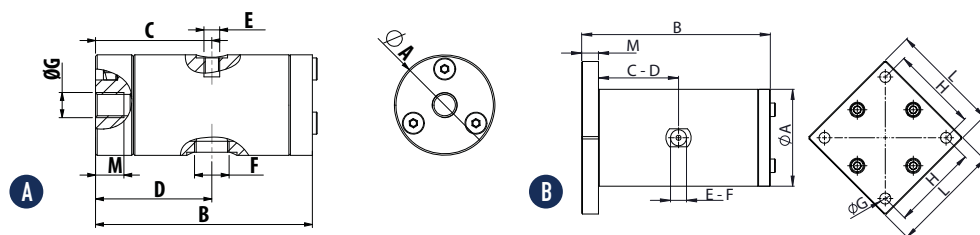
SAFETY CHAIN	Available
--------------	-----------

This information is furnished without warranty, representation, inducement or license of any kind. It is accurate to the best OLI knowledge or is obtained from sources believed to be accurate. OLI therefore assumes no legal responsibility. The latest and most updated information are available online.





K - Linear pneumatic vibrators - Cushioned



DIMENSIONAL SPECIFICATIONS																							
MODEL	DRAW.	A		B		C		D		E		F		G		H		L		M		WEIGHT	
		mm	in	mm	in	mm	in	mm	in	IN	OUT		mm	in	mm	in	mm	in	mm	in	kg	lb	
K 15 - K 15 LF	A	32	1.3	69	2.7	37	1.5	37	1.5	M5	1/8" BSPP	M8	/	/	/	/	/	/	9	0.4	0.2	0.4	
K 22 - K 22 LF	A	45	1.8	105	4.1	56	2.2	56	2.2	1/8" BSPP	1/8" BSPP	M10	/	/	/	/	/	/	13	0.5	0.5	1.1	
K 30 - K 30 LF	A	60	2.4	116	4.6	62	2.4	62	2.4	1/4" BSPP	1/4" BSPP	M12	/	/	/	/	/	/	13	0.5	1.0	2.3	
K 45 - K 45 LF	B	80	3.2	151	5.9	78	3.1	78	3.1	1/4" BSPP	3/8" BSPP	ø 8.5	72	2.8	90	3.5	15	0.6	2.9	6.3	6.3		
K 60 - K 60 LF	B	115	4.5	224	8.8	115	4.5	115	4.5	1/2" BSPP	1/2" BSPP	ø 13	102	4.0	130	5.1	20	0.8	4.6	10.1	10.1		

LF = Lubrication Free

MODEL	2 bar (29 psi)								4 bar (58 psi)								6 bar (87 psi)							
	VIBRATION	FORCE		WORKING MOMENT		AIR CONSUMP.		VIBRATION	FORCE		WORKING MOMENT		AIR CONSUMP.		VIBRATION	FORCE		WORKING MOMENT		AIR CONSUMP.				
		VPM	N	lb	kgcm	inlb	l/min*		cfm	VPM	N	lb	kgcm	inlb		l/min*	cfm	VPM	N	lb	kgcm	inlb	l/min*	cfm
K 15	5040	33.4	7.5	0.02	0.02	9	0.3	5880	45.4	10.2	0.02	0.02	15	0.5	6720	59.4	13.3	0.02	0.02	21	0.7			
K 22	2880	95.4	21.4	0.21	0.18	32	1.1	3480	139.3	31.3	0.21	0.18	50	1.8	4080	191.5	43.0	0.21	0.18	73	2.6			
K 30	2640	171.8	38.6	0.45	0.39	45	1.6	3120	239.9	53.9	0.45	0.39	90	3.2	3720	341.1	76.7	0.45	0.39	140	4.9			
K 45	1920	390.9	87.8	1.94	1.68	56	2.0	2400	610.8	137.3	1.94	1.68	125	4.4	2580	705.9	158.6	1.94	1.68	194	6.8			
K 60	1260	722.6	162.4	8.31	7.21	70	2.7	1560	1107.7	248.9	8.31	7.21	125	4.4	2160	2123.7	477.3	8.31	7.21	202	7.1			
K 15 LF	5040	33.4	7.5	0.02	0.02	9	0.3	5880	45.4	10.2	0.02	0.02	15	0.5	6720	59.4	13.3	0.02	0.02	21	0.7			
K 22 LF	2880	81.8	18.4	0.18	0.16	32	1.1	3480	119.4	26.8	0.18	0.16	50	1.8	4080	164.1	36.9	0.18	0.16	73	2.6			
K 30 LF	2640	160.3	36.0	0.42	0.36	45	1.6	3120	223.9	50.3	0.42	0.36	90	3.2	3720	318.4	71.5	0.42	0.36	140	4.9			
K 45 LF	1920	394.2	88.6	1.95	1.69	56	2.0	2400	615.9	138.4	1.95	1.69	125	4.4	2580	711.7	159.9	1.95	1.69	194	6.8			
K 60 LF	1260	722.6	162.4	8.31	7.21	70	2.7	1560	1107.7	248.9	8.31	7.21	125	4.4	2160	2123.7	477.3	8.31	7.21	202	7.1			

LF = Lubrication Free

* Indicates in l/min the total air consumption normalized at the rated pressure.

K - CUSHIONED LINEAR PNEUMATIC VIBRATORS

APPLICATION	Hopper silo - compaction - vibrating feeder - table and channel
POWDER	Hygroscopic - dusty and granular
PROBLEM SOLVING	Detaching and compacting

FEATURES

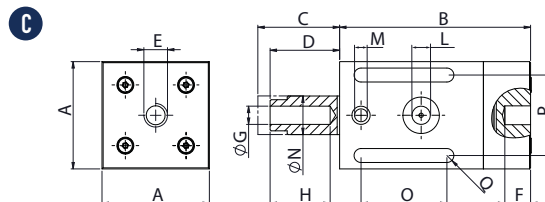
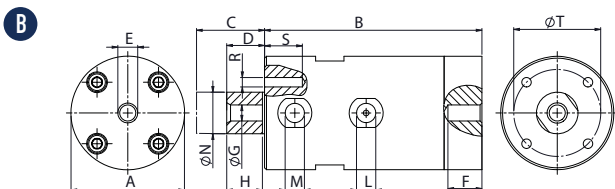
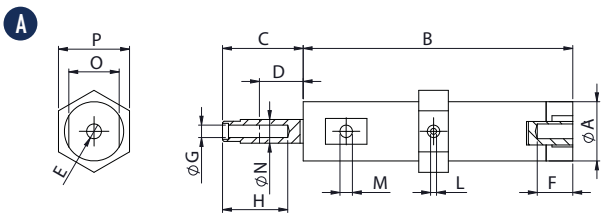
DUTY CYCLE	Continuous
WORKING PRESSURE	From 2 bar to 6 bar (from 29 psi to 87 psi)
PNEUMATIC CIRCUIT	K: Filter + flow control valve + lubrication + 3/2 ways valve K-LF: Filter + flow control valve + 3/2 ways valve
AIR SUPPLY QUALITY	K: Class 5.4.4 K-LF: Class 5.4.1
WORKING TEMPERATURE	From -20 °C to 130 °C (from -4 °F to 266 °F)
MAX NOISE LEVEL	80 dB(a)
TECHNOLOGY	Piston pneumatic cushioned
ATEX	II 2D C TX II 2G C TX
MATERIAL	Aluminium body



This information is furnished without warranty, representation, inducement or license of any kind. It is accurate to the best OLI knowledge or is obtained from sources believed to be accurate. OLI therefore assumes no legal responsibility. The latest and most updated information are available online.



F - Linear pneumatic vibrators - Adjustable cushioned



DIMENSIONAL SPECIFICATIONS

MODEL	DRAW.	A		B		C		D		E		F		G		H		I		L		M		N		O		P		Q		R		S		T		WEIGHT	
		mm	in	mm	in	mm	in	mm	in	mm	in	mm	in	mm	in	mm	in	mm	in	mm	in	mm	in	mm	in	mm	in	mm	in	mm	in	mm	in	mm	in	kg	lb		
F8	A	20	0.8	91	3.6	30	1.2	5	0.2	M6	10	0.4	M5	20	0.8	7	0.3	M5	M5	8	0.3	17	0.7	24	0.9	/	/	/	/	/	/	/	/	/	/	/	/	0.1	0.2
F15	B	50	2.0	115	4.5	41	1.6	7	0.3	M10	15	0.6	M10	15	0.6	13	0.5	1/8" BSPP	1/8" BSPP	15	0.6	12	0.5	/	/	36	1.4	M6	18	0.70	36	1.4	36	1.4	1.5	3.3			
F15P	B	50	2.0	115	4.5	39	1.5	9	0.4	M10	15	0.6	M10	22	0.9	13	0.5	1/8" BSPP	1/8" BSPP	16	0.6	/	/	/	/	/	/	M6	12	0.47	36	1.4	36	1.4	0.5	1.1			
F18	C	50	2.0	89	3.5	32	1.3	10	0.4	M10	10	0.4	M10	26	1.0	12	0.5	1/8" BSPP	1/8" BSPP	18	0.7	40	1.6	38	1.5	7	0.3	/	/	/	/	/	/	/	/	/	0.6	1.3	
F25	B	60	2.4	115	4.5	45	1.8	10	0.4	M10	15	0.6	M10	15	0.6	19	0.8	1/4" BSPP	1/4" BSPP	22	0.9	15	0.6	/	/	46	1.8	M6	18	0.70	46	1.8	46	1.8	2.3	5.1			
F40	B	85	3.4	140	5.5	57	2.2	13	0.5	M16	17	0.7	M16	20	0.8	36	1.4	1/4" BSPP	3/8" BSPP	40	1.6	20	0.8	/	/	65	2.6	M6	16	0.62	65	2.6	65	2.6	5.7	12.5			
F85	B	160	6.3	122	4.8	52	2.1	22	0.9	M20	30	1.2	M20	30	1.2	/	/	3/8" BSPP	2x3/8" BSPP	85	3.3	/	/	/	/	/	/	M10	/	/	140	5.5	140	5.5	16.5	36.3			

MODEL	2 bar								4 bar								6 bar							
	VIBRA-TION		FORCE		WORKING MOMENT		AIR CONSUMPTION		VIBRA-TION		FORCE		WORKING MOMENT		AIR CONSUMPTION		VIBRA-TION		FORCE		WORKING MOMENT		AIR CONSUMPTION	
	V/min	N	lb	kgcm	inlb	l/min*	cfm	V/min	N	lb	kgcm	inlb	l/min*	cfm	V/min	N	lb	kgcm	inlb	l/min*	cfm			
F8	2020	9.1	2	0.04	0.04	7	0.2	2950	19.3	4.3	0.04	0.04	19	0.7	3600	28.8	6.5	0.04	0.04	28	1.0			
F15	2280	75.7	17	0.27	0.23	20	0.7	2520	92.5	20.8	0.27	0.23	38	1.3	2820	115.9	26	0.27	0.23	67	2.4			
F15P	1920	54.5	12.3	0.27	0.23	20	0.7	2160	69.0	15.5	0.27	0.23	42	1.5	2340	81	18.2	0.27	0.23	80	2.8			
F18	2070	71.8	16.1	0.31	0.27	29	1.0	2520	106.4	23.9	0.31	0.27	55	1.9	3300	182.5	41	0.31	0.27	100	3.5			
F25	1860	108	24.3	0.57	0.49	32	1.1	2040	129.9	29.2	0.57	0.49	60	2.1	2220	179.8	40.4	0.57	0.49	105	3.7			
F40	1380	259.6	58.3	2.49	2.16	80	2.8	1560	331.8	74.6	2.49	2.16	190	6.7	1740	412.8	92.8	2.49	2.16	320	11.2			
F85	1680	2137.2	480.3	13.82	12.00	240	8.4	1980	2968.6	667.1	13.82	12.00	390	13.7	2280	3936.3	884.6	13.82	12.00	580	20.4			

* Indicates in l/min the total air consumption normalized at the rated pressure.

F - LINEAR PNEUMATIC VIBRATORS - ADJUSTABLE CUSHIONED

APPLICATION	Vibrating feeder - table and channel
POWDER	Hygroscopic - dusty and granular
PROBLEM SOLVING	Detaching and compacting




FEATURES

DUTY CYCLE	Continuous
WORKING PRESSURE	From 2 bar to 6 bar (from 29 psi to 87 psi)
PNEUMATIC CIRCUIT	Filter + flow control valve + lubrication + 3/2 ways valve
AIR SUPPLY QUALITY	Class 5.4.4. F15P - F18Q class 5.4.1
WORKING TEMPERATURE	From -20 °C to 200 °C (from -4 °F to 392 °F) F15P - from -20 °C to 100 °C (from -4 °F to 212 °F)
MAX NOISE LEVEL	80 dB(a)
TECHNOLOGY	Piston pneumatic cushioned
ATEX	II 2D C TX II 2G C TX
MATERIAL	Grey cast iron body (powered painted) F15P: nylon body and aluminium cover F18: aluminium body (square shape)

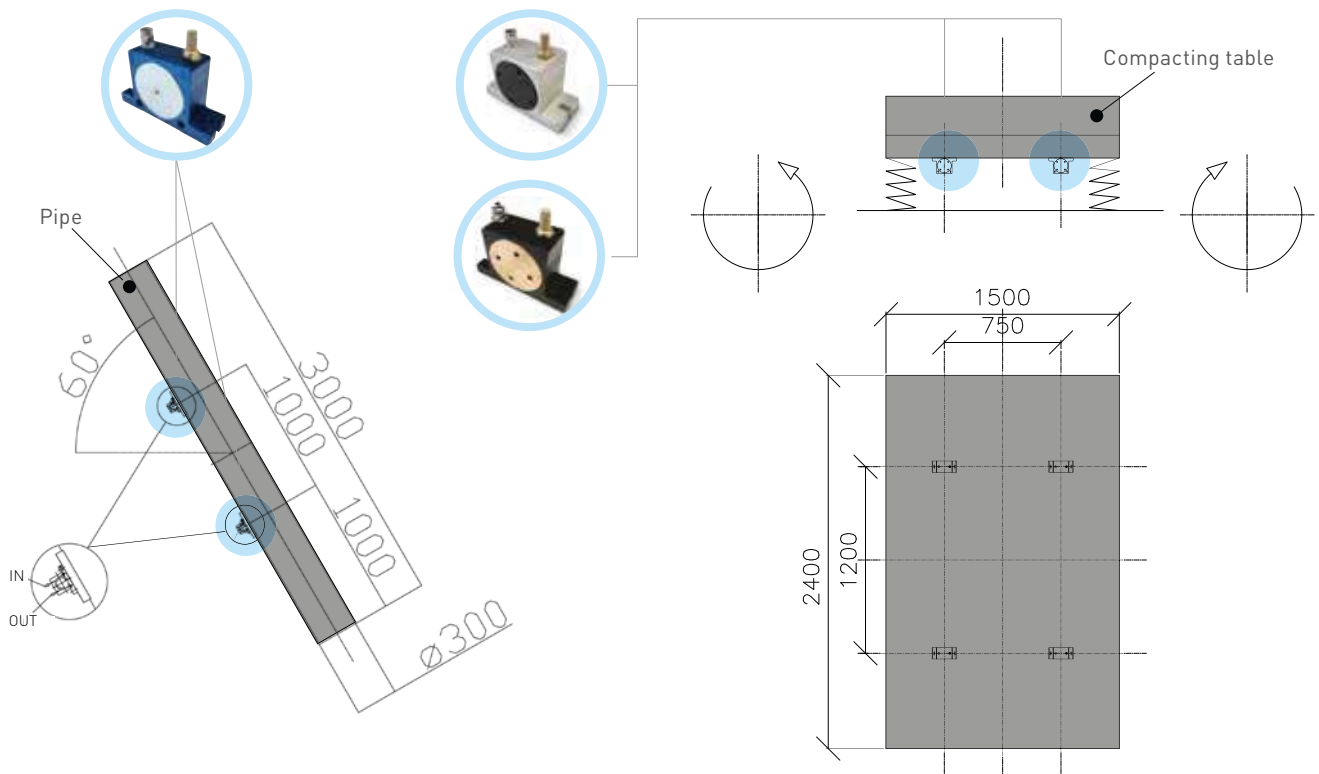


EXTERNAL APPLICATION

ROTARY PNEUMATIC VIBRATORS

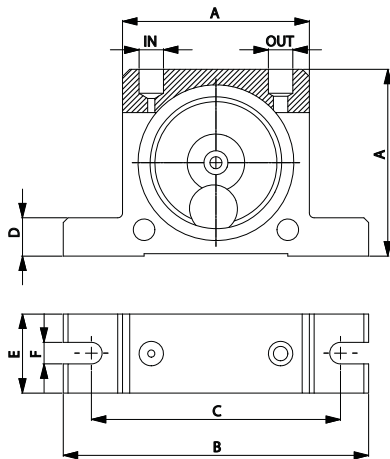
PRODUCT SERIES	APPLICATIONS	POWDERS	FEATURES	BENEFITS
BALL VIBRATORS S 	Silos Hoppers Piping Chutes Compacting	Dry powders Granules Plastics Sand Ashes Cement Lime	Filter sleeve cleaning. Suitable for outdoor use. Resistant to oxidation. Atex II2G c Tx Atex II2D c Tx	Economical Low air consumption High frequency vibration
ROLLER VIBRATORS OR 	Silos Hoppers Piping Chutes Concrete compaction	Hygroscopic powders Cement Concrete Sand Foundry sand	Compact and robust design. Suitable for outdoor use. Resistant to oxidations. Atex II2G c Tx Atex II2D c Tx	High centrifugal force Low air consumption High frequency vibration Suitable for high temperature
TURBINE VIBRATORS OT 	Silos Hoppers Piping Chutes	Food powders Sugar Bicarbonate Phosphate Sodium	Suitable for food and pharmaceutical applications. Resistant to oxidation. Atex II2G c Tx Atex II2D c Tx	High performance Silent Low air consumption

APPLICATIONS





S - Rotary pneumatic vibrators - Ball



DIMENSIONAL SPECIFICATIONS

MODEL	A		B		C		D		E		F		IN-OUT	WEIGHT	
	mm	in	mm	in	mm	in	mm	in	mm	in	mm	in		kg	lb
S8	50	2.0	86	3.4	68	2.7	12	0.5	20	0.8	7	0.3	1/8" BSPP	0.13	0.29
S10	50	2.0	86	3.4	68	2.7	12	0.5	20	0.8	7	0.3	1/8" BSPP	0.13	0.29
S13	65	2.6	113	4.5	90	3.5	16	0.6	25	1.0	9	0.4	1/4" BSPP	0.26	0.57
S16	65	2.6	113	4.5	90	3.5	16	0.6	28	1.1	9	0.4	1/4" BSPP	0.30	0.66
S20	80	3.2	128	5.1	104	4.1	16	0.6	33	1.3	9	0.4	1/4" BSPP	0.53	1.17
S25	80	3.2	128	5.1	104	4.1	16	0.6	38	1.5	9	0.4	1/4" BSPP	0.63	1.39
S30	100	3.9	160	6.3	130	5.1	20	0.8	45	1.8	11	0.4	3/8" BSPP	1.13	2.49
S36	100	3.9	160	6.3	130	5.1	20	0.8	50	2.0	11	0.4	3/8" BSPP	1.34	2.95

MODEL	VIBRATION			C.F. MAX						AIR CONSUMPTION					
	Vpm			2 bar (29 psi)		4 bar (58psi)		6 bar (87 psi)		2 bar (29 psi)		4 bar (58psi)		6 bar (87 psi)	
	2 bar (29 psi)	4 bar (58psi)	6 bar (87 psi)	kg	lb	kg	lb	kg	lb	l/min*	CF/min	l/min*	CF/min	l/min*	CF/min
S8	25500	31000	35000	13	29	26	57	36	79	83	2.9	145	5.1	195	6.9
S10	22500	28000	34000	25	55	47	103	71	156	92	3.2	150	5.3	200	7.1
S13	15000	18500	22500	32	70	55	121	87	191	94	3.3	158	5.6	225	7.9
S16	13000	17000	19500	45	99	80	176	110	242	122	4.3	200	7.1	280	9.9
S20	10500	14500	16500	72	158	122	268	172	378	130	4.6	230	8.1	340	12.0
S25	9200	12200	14000	93	205	157	345	205	451	160	5.7	290	10.2	425	15.0
S30	7800	9700	12500	151	332	247	543	321	706	215	7.6	375	13.2	570	20.1
S36	7300	9000	10000	206	453	315	693	405	891	260	9.2	475	16.8	675	23.8

* Indicates in l/min the total air consumption normalized at the rated pressure.

S - ROTARY PNEUMATIC VIBRATORS - BALL

APPLICATION	Hopper and silo - screen - vibrating table - chute
POWDER	Dry and granular
PROBLEM SOLVING	Friction reduction - separation

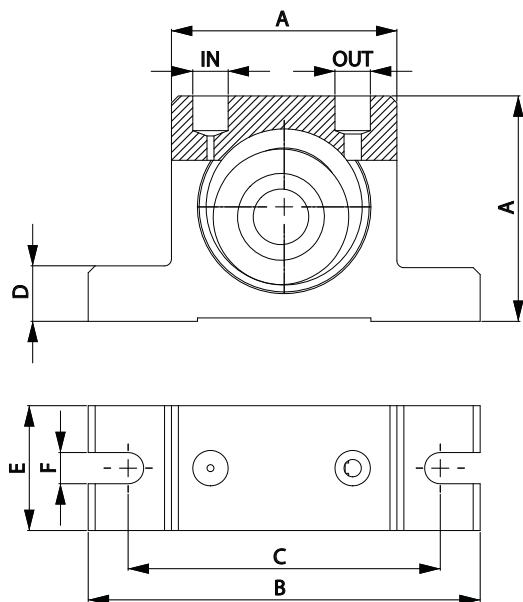
FEATURES

DUTY CYCLE	Continuous
WORKING PRESSURE	From 2 bar to 6 bar (from 29 psi to 87 psi)
PNEUMATIC CIRCUIT	Filter + flow control valve + lubrication + 3/2 ways valve
AIR SUPPLY QUALITY	Class 5.4.4.
WORKING TEMPERATURE	From -20 °C to 200 °C (from -4 °F to 392 °F)
MAX NOISE LEVEL	90 dB(a)
TECHNOLOGY	Rotary vibration - high frequency
ATEX	II 2D C TX II 2G C TX
MATERIAL	Aluminium body and zinc plate cover





OR - Rotary pneumatic vibrators - Roller



DIMENSIONAL SPECIFICATIONS

MODEL	A		B		C		D		E		F		IN-OUT	WEIGHT	
	mm	in	mm	in	mm	in	mm	in	mm	in	mm	in		kg	lb
OR50	50	2.0	86	3.4	68	2.7	12	0.5	30	1.2	7	0.3	1/8" BSPP	0.37	0.81
OR65	65	2.6	113	4.5	90	3.5	16	0.6	36	1.4	9	0.4	1/4" BSPP	0.76	1.67
OR80	80	3.2	128	5.1	102	4.0	16	0.6	40	1.6	9	0.4	1/4" BSPP	1.27	2.79
OR100	100	3.9	160	6.3	130	5.1	20	0.8	52	2.1	11	0.4	1/4"-3/8" BSPP	2.60	5.72

MODEL	VIBRATION			C.F. MAX						AIR CONSUMPTION					
	Vpm			2 bar (29 psi)		4 bar (58 psi)		6 bar (87 psi)		2 bar (29 psi)		4 bar (58 psi)		6 bar (87 psi)	
	2 bar (29 psi)	4 bar (58 psi)	6 bar (87 psi)	kg	lb	kg	lb	kg	lb	l/min*	CF/min	l/min*	CF/min	l/min*	CF/min
OR50	21000	25000	29500	188	413	281	619	355	780	78	2.8	144	5.1	204	7.2
OR65	19000	22000	26000	235	516	439	966	552	1215	100	3.5	198	7.0	296	10.5
OR80	14000	16000	21500	342	752	587	1292	624	1373	122	4.3	255	9.0	378	13.3
OR100	6750	9750	11000	289	637	604	1329	783	1722	132	4.7	284	10.0	412	14.5

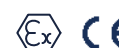
* Indicates in l/min the total air consumption normalized at the rated pressure.

OR - ROTARY PNEUMATIC VIBRATORS - ROLLER

APPLICATION	Hopper and silo - piping - chute - concrete compaction
POWDER	Hygroscopic
PROBLEM SOLVING	Friction reduction - compaction

FEATURES

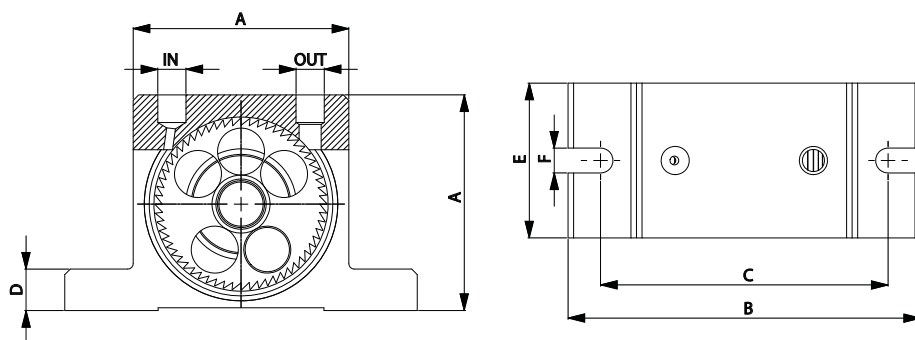
DUTY CYCLE	Continuous
WORKING PRESSURE	From 2 bar to 6 bar (from 29 psi to 87 psi)
PNEUMATIC CIRCUIT	Filter + flow control valve + lubrication + 3/2 ways valve
AIR SUPPLY QUALITY	Class 5.4.4.
WORKING TEMPERATURE	From -20 °C to 200 °C (from -4 °F to 392 °F)
MAX NOISE LEVEL	<90 dB(a)
TECHNOLOGY	Roller vibration - high frequency and centrifugal force
ATEX	II 2D C TX II 2G C TX
MATERIAL	Aluminium body and brass cover



This information is furnished without warranty, representation, inducement or license of any kind. It is accurate to the best OLI knowledge or is obtained from sources believed to be accurate. OLI therefore assumes no legal responsibility. The latest and most updated information are available online.



OT - Rotary pneumatic vibrators - Turbine



DIMENSIONAL SPECIFICATIONS

MODEL	A		B		C		D		E		F		IN-OUT	WEIGHT	
	mm	in	mm	in	mm	in	mm	in	mm	in	mm	in		kg	lb
OT8	50	2.0	86	3.4	68	2.7	12	0.5	33	1.3	7	0.3	1/8" BSPP	0.25	0.55
OT10	50	2.0	86	3.4	68	2.7	12	0.5	33	1.3	7	0.3	1/8" BSPP	0.26	0.56
OT10S	50	2.0	86	3.4	68	2.7	12	0.5	33	1.3	7	0.3	1/8" BSPP	0.26	0.58
OT13	65	2.6	113	4.5	90	3.5	16	0.6	42	1.7	9	0.4	1/4" BSPP	0.57	1.24
OT16	65	2.6	113	4.5	90	3.5	16	0.6	42	1.7	9	0.4	1/4" BSPP	0.58	1.28
OT16S	65	2.6	113	4.5	90	3.5	16	0.6	42	1.7	9	0.4	1/4" BSPP	0.61	1.35
OT20	80	3.2	128	5.0	104	4.1	16	0.6	56	2.2	9	0.4	1/4" BSPP	1.09	2.40
OT25	80	3.2	128	5.0	104	4.1	16	0.6	56	2.2	9	0.4	1/4" BSPP	1.12	2.46
OT25S	80	3.2	128	5.0	104	4.1	16	0.6	56	2.2	9	0.4	1/4" BSPP	1.20	2.64
OT30	100	3.9	160	6.3	130	5.1	20	0.8	73	2.9	11	0.4	3/8" BSPP	2.20	4.84
OT36	100	3.9	160	6.3	130	5.1	20	0.8	73	2.9	11	0.4	3/8" BSPP	2.30	5.06
OT36S	100	3.9	160	6.3	130	5.1	20	0.8	73	2.9	11	0.4	3/8" BSPP	2.53	5.57

MODEL	VIBRATION			C.F. MAX						AIR CONSUMPTION					
	Vpm			2 bar (29 psi)		4 bar (58psi)		6 bar (87psi)		2 bar (29 psi)		4 bar (58psi)		6 bar (87psi)	
	2 bar (29 psi)	4 bar (58psi)	6 bar (87psi)	kg	lb	kg	lb	kg	lb	l/min*	CF/min	l/min*	CF/min	l/min*	CF/min
OT8	34000	38000	42000	110	242	205	451	292	641	45	1.6	81	2.9	110	3.9
OT10	26000	33000	38000	105	231	171	377	252	554	45	1.6	81	2.9	110	3.9
OT10S	17200	23400	26000	72	159	147	323	187	410	45	1.6	81	2.9	110	3.9
OT13	24500	28500	31000	202	444	263	579	300	659	122	4.3	204	7.2	285	10.1
OT16	18000	20000	21000	194	427	239	527	264	581	122	4.3	204	7.2	285	10.1
OT16S	11500	15000	17500	129	285	196	431	234	516	122	4.3	204	7.2	285	10.1
OT20	14500	19000	23000	251	552	404	888	526	1157	184	6.5	318	11.2	452	16.0
OT25	13200	15500	17000	244	537	336	740	508	1117	184	6.5	318	11.2	452	16.0
OT25S	9000	11000	13500	214	471	335	738	483	1063	184	6.5	318	11.2	452	16.0
OT30	11000	12500	14500	351	771	721	1586	781	1718	322	11.4	542	19.1	749	26.5
OT36	8500	11500	12000	341	751	698	1536	749	1648	322	11.4	542	19.1	749	26.5
OT36S	6000	7000	8500	406	893	706	1554	754	1660	322	11.4	542	19.1	749	26.5

* Indicates in l/min the total air consumption normalized at the rated pressure.

OT - ROTARY PNEUMATIC VIBRATORS - TURBINE

APPLICATION	Hopper and silo - screen - vibrating table - chute - concrete consolidation
POWDER	Dry and granular [food] - concrete
PROBLEM SOLVING	Friction reduction - separation - consolidation

FEATURES

DUTY CYCLE	Continuous
WORKING PRESSURE	From 2 bar to 6 bar (from 29 psi to 87 psi)
PNEUMATIC CIRCUIT	Filter + flow control valve + 3/2 ways valve
AIR SUPPLY QUALITY	Class 5.4.1.
WORKING TEMPERATURE	From -20 °C to 120 °C (from -4 °F to 248 °F)
MAX NOISE LEVEL	<90 dB(a)
TECHNOLOGY	Turbine vibration - high frequency and centrifugal force
ATEX	II 2D C TX II 2G C TX
MATERIAL	Aluminium body



This information is furnished without warranty, representation, inducement or license of any kind. It is accurate to the best OLI knowledge or is obtained from sources believed to be accurate. OLI therefore assumes no legal responsibility. The latest and most updated information are available online.

EXTERNAL APPLICATION

ELECTRIC VIBRATORS

PRODUCT SERIES

2 POLES MICRO
MVE-MICRO



APPLICATIONS

Small hoppers
Micro-screens
Chutes
Vibrating feeders,
tables and
channels

POWDERS

Fine, dry powder.
Plastics
Sugar
Bicarbonate
Seeds

FEATURES

Compact, uni-body,
heavy-duty design.
Supplied with
stainless
steel covers in
standard version.
Atex II2D T100 °C.

BENEFITS

Economical
Easy to install
Single phase cable
with built-in capacitor
Adjustable force

2 POLES
MVE



Silos
Hoppers
Dispensers
Agitators
Mixers
Filter cleaning
Vibrating feeders
and tables

**Fine and dry
powders,
granules.**
Cement
Flour
Grit
Sugar

Suitable for indoor
and outdoor use.
Silos and hoppers
of any material
and capacity from
200 to 10,000 kg.
Atex II2D T100 °C.

Economical
Wide range
Special windings
for different
geographical areas
Adjustable force

DIRECT CURRENT
MVE-DC



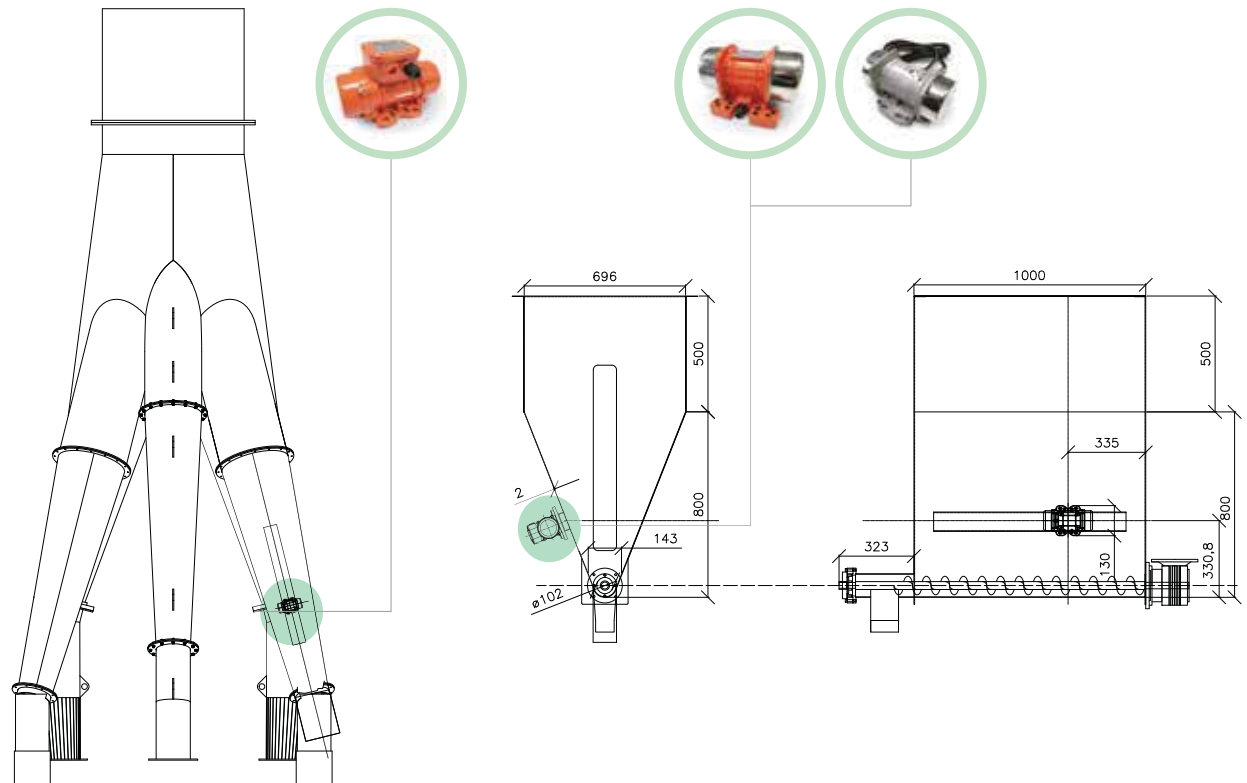
Automotive
Hoppers
Salt and manure
spreaders
Dump trucks
Concrete pump
grids

Granular powders.
Concrete
Fertilizers
Corn
Soy
Rice
Seeds
Salt
Sand

Stainless steel
covers.
DC Motor 3,000
RPM 12V-24V.
Power from 80
to 520 W.
Resistant to oxidation.

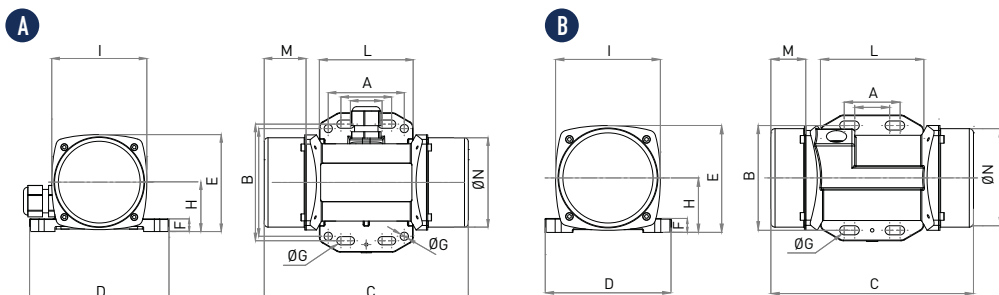
Economical
Robust
Safe
Terminal box connection
sealed (option)
Adjustable force

APPLICATIONS





MVE-MICRO - 2 poles electric vibrators



DIMENSIONAL SPECIFICATIONS

MODEL		DRAW.	C		M		A		B		Ø G		HOLES n°	D		E		F		H		I		L		N		SCREW	
50 Hz	60 Hz - USA		mm	in	mm	in	mm	in	mm	in	mm	in		mm	in	mm	in	mm	in	mm	in	mm	in	mm	in	mm	in	mm	in
MVE 21/3E-MICRO	MVE 21/36E-MICRO	A	145	5.7	25	1.0	25-40	1-1.6	92	3.6	6.5	0.3	4	110	4.3	76.5	3.0	10	0.4	39	1.5	75	3.0	74	2.9	70.5	2.8	M5	3/16"
MVE 41/3E-MICRO	MVE41/36E-MICRO	B	145	5.7	25	1.0	25-40	1-1.6	75	3.0	6.5	0.3	4	90	3.5	76.5	3.0	10	0.4	39	1.5	75	3.0	74	2.9	70.5	2.8	M5	3/16"
MVE 3/3E-MICRO-M	MVE 3/36E-MICRO-M	A	145	5.7	25	1.0	25-40	1-1.6	92	3.6	6.5	0.3	4	110	4.3	76.5	3.0	10	0.4	39	1.5	75	3.0	74	2.9	70.5	2.8	M5	3/16"
MVE 6/3E-MICRO-M	MVE 6/36E-MICRO-M	B	145	5.7	25	1.0	25-40	1-1.6	75	3.0	6.5	0.3	4	90	3.5	76.5	3.0	10	0.4	39	1.5	75	3.0	74	2.9	70.5	2.8	M5	3/16"
MVE 21/3E-MICRO-M	MVE 21/36E-MICRO-M	A	145	5.7	25	1.0	25-40	1-1.6	92	3.6	6.5	0.3	4	110	4.3	76.5	3.0	10	0.4	39	1.5	75	3.0	74	2.9	70.5	2.8	M5	3/16"
MVE 41/3E-MICRO-M	MVE 41/36E-MICRO-M	A	161	6.3	33	1.3	25-40	1-1.6	92	3.6	6.5	0.3	4	110	4.3	76.5	3.0	10	0.4	39	1.5	75	3.0	74	2.9	70.5	2.8	M5	3/16"

MVE-MICRO THREE PHASE - 3000 RPM 400V 50HZ / 3600 RPM 460V 60HZ

MODEL		WORKING MOMENT		CENTRIFUGAL FORCE				WEIGHT		ELECTRICAL FEATURES																				
										POWER				CURRENT				COSΦ												
										kW		Hp		A max																
50 Hz	60 Hz - USA	50Hz	60Hz	50Hz	60Hz	50Hz	60Hz	50Hz	60Hz	kg	lb	50Hz	60Hz	50Hz	60Hz	230V	400V	460V	230V	400V	460V	50Hz	50Hz	60Hz	50Hz	50Hz	60Hz	50Hz	60Hz	
MVE 21/3E-MICRO	MVE 21/36E-MICRO	0.40	0.40	0.35	0.35	20	29	44	64	2.0	4.4	0.04	0.04	0.05	0.05	0.21	0.12	0.12	0.45	0.45	0.42									
MVE 41/3E-MICRO	MVE41/36E-MICRO	0.90	0.90	0.78	0.78	45	65	99	143	2.4	5.3	0.06	0.06	0.08	0.08	0.30	0.18	0.18	0.44	0.44	0.40									

MVE-MICRO SINGLE PHASE - 3000 RPM 230V 50HZ / 3600 RPM 115V 60HZ

MODEL		WORKING MOMENT		CENTRIFUGAL FORCE				WEIGHT		ELECTRICAL FEATURES																				
										POWER				CURRENT				COSΦ												
										Kw		Hp		A max																
50 Hz	60 Hz - USA	50Hz	60Hz	50Hz	60Hz	50Hz	60Hz	50Hz	60Hz	kg	lb	50Hz	60Hz	50Hz	60Hz	230V	115V	230V	115V	230V	115V	50Hz	60Hz	50Hz	60Hz	50Hz	60Hz	50Hz	60Hz	
MVE 3/3E-MICRO-M	MVE 3/36E-MICRO-M	0.08	0.08	0.07	0.07	4	6	9	13	1.6	3.5	0.03	0.04	0.04	0.05	0.30	0.80	0.43	0.43											
MVE 6/3E-MICRO-M	MVE 6/36E-MICRO-M	0.12	0.12	0.10	0.10	6	9	13	20	1.6	3.5	0.03	0.04	0.04	0.05	0.30	0.80	0.43	0.43											
MVE 21/3E-MICRO-M	MVE 21/36E-MICRO-M	0.40	0.40	0.35	0.35	20	29	44	64	2.0	4.4	0.04	0.07	0.05	0.09	0.20	0.80	0.80	0.80											
MVE 41/3E-MICRO-M	MVE 41/36E-MICRO-M	0.90	0.90	0.78	0.78	45	65	99	143	2.4	5.3	0.05	0.07	0.07	0.09	0.25	0.80	0.80	0.80											

MVE-MICRO - 2 POLES ELECTRIC VIBRATORS - THREE PHASE / SINGLE PHASE

APPLICATION	Small hopper - micro screen - chute - vibrating feeder table and channels
POWDER	Fine - dry
PROBLEM SOLVING	Bridge and rat-holing

FEATURES

DUTY CYCLE	Continuous - S1
ENVIRONMENT TEMPERATURE	From -20 °C to 40 °C (from -4 °F to 104 °F)
MAX NOISE LEVEL	76 dB(A)
ATEX	II3D Ex tc IIIC Tx IP 66
MATERIAL	Body aluminium - stainless steel cover
CAPACITOR	MICRO 21 - 115v µF 4, 220v 50/60Hz µF1,5 MICRO 41 - 115v µF 4, 220v 50/60Hz µF3

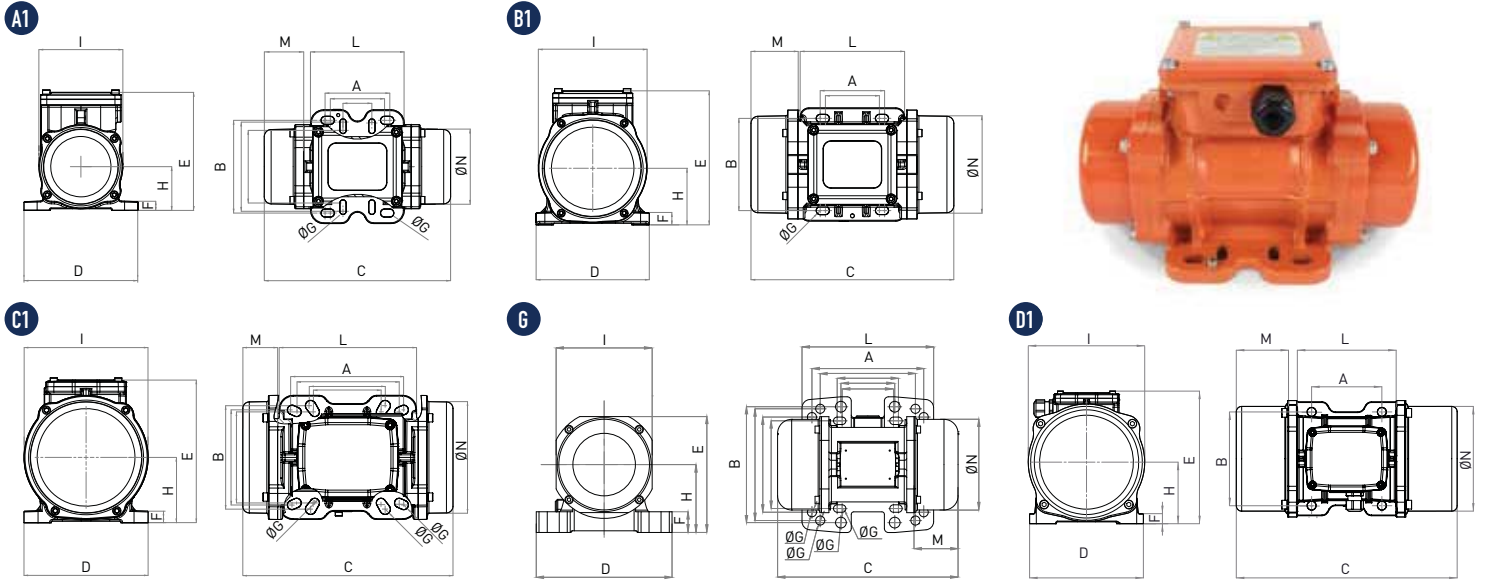
OPTIONS

ATEX	Ex II 2D Ex tb IIIC Tx Db IP 66 Ex tb IIIC Tx Db IP66
CUSTOMISED CABLE	Available





MVE - 2 poles electric vibrators



THREE PHASE MODEL			DRAWING	SIZE	C		M		A		B		ØG		HOLES	D		E		F		H		I		L		N		WEIGHT	
50 Hz	60 Hz	60 Hz U.S. Market			mm	in	mm	in	mm	in	mm	in	mm	in		mm	in	mm	in	mm	in	mm	in	mm	in	mm	in	mm	in	mm	in
MVE 60/3E-10A0	MVE 60/36E-10A0	MVE 160/2E-10A0	A1	10A0	213	8.4	45	1.8	62-74 33	2.44-2.91 1.3	106	4.2	9	0.4	4	130	5.1	135	5.3	11	0.4	50	2.0	96	3.8	107	4.2	85	3.3	4	9.3
MVE 100/3E-10A0	MVE 100/36E-10A0	MVE 220/2E-10A0	A1	10A0	213	8.4	45	1.8	62-74 33	2.44-2.91 1.3	106	4.2	9	0.4	4	130	5.1	135	5.3	11	0.4	50	2.0	96	3.8	107	4.2	85	3.3	5	11.0
MVE 200/3E-20A0	MVE 200/36E-20A0	MVE 440/2E-20A0	B1	20A0	233	9.2	54	2.1	62-74	2.44-2.91	106	4.2	9	0.4	4	130	5.1	154	6.1	15	0.6	65	2.6	125	4.9	120	4.7	112	4.4	7	15.4
MVE 200/3E-23A0	MVE 200/36E-23A0	MVE 440/2E-23A0	G	23A0	222	8.7	55	2.2	62-74 65 115 135	2.44-2.91 2.6 4.5 5.3	106 140 135 115	4.2 5.5 5.3 4.5	9 13 11	0.4 0.5 0.4	4	164	6.5	140	5.5	25	1.0	82	3.2	116	4.6	159	6.3	110	4.3	7	16.0
MVE 300/3E-30A0	MVE 300/36E-30A0	MVE 690/2E-30A0	C1	30A0	254	10.0	42	1.7	62-74 80 90 124 135	2.44-2.91 3.1 3.5 4.9 5.3	106 110 125 110 115	4.2 4.3 4.9 4.3 4.5	9 13 11	0.4 0.4 0.5 0.4	4	150	5.9	173	6.8	15	0.6	79	3.1	150	5.9	166	6.5	134	5.3	10	21.6
MVE 400/3E-30A0	MVE 400/36E-30A0	MVE 890/2E-30A0	C1	30A0	274	10.8	52	2.0	62-74 80 90 124 135	2.44-2.91 3.1 3.5 4.9 5.3	106 110 125 110 115	4.2 4.3 4.9 4.3 4.5	9 13 11	0.4 0.4 0.5 0.4	4	150	5.9	173	6.8	15	0.6	79	3.1	150	5.9	166	6.5	134	5.3	10	22.7
MVE 500/3E-40A0	MVE 500/36E-40A0	MVE 1200/2E-40A0	D1	40A0	330	13.0	78	3.1	62-74	2.44-2.91	106	4.2	9	0.4	4	170	6.7	196	7.7	20	0.6	92	3.6	169	6.7	166	6.5	158	6.2	16	34.8
MVE 700/3E-40A0	MVE 700/36E-40A0	MVE 1700/2E-40A0	D1	40A0	330	13.0	78	3.1	62-74	2.44-2.91	106	4.2	9	0.4	4	170	6.7	196	7.7	20	0.6	92	3.6	169	6.7	166	6.5	158	6.2	17	36.4
MVE 800/3E-50A0	MVE 800/36E-50A0	MVE 1800/2E-50A0	D1	50A0	321	12.6	62	2.4	62-74	2.44-2.91	106	4.2	9	0.4	4	208	8.2	210	8.3	22	0.9	96	3.8	185	7.3	192	7.6	170	6.7	20	44.8

SINGLE PHASE MODEL			DRAWING	SIZE	C		M		A		B		ØG		HOLES	D		E		F		H		I		L		N		WEIGHT	
50 Hz	60 Hz	60 Hz U.S. Market			mm	in	mm	in	mm	in	mm	in	mm	in		mm	in	mm	in	mm	in	mm	in	mm	in	mm	in	mm	in	mm	in
MVE 60/3E-10A0-M	MVE 60/36E-10A0-M	MVE 160/2E-10A0-M	A1	10A0	213	8.4	45	1.8	62-74 33	2.44-2.91 1.3	106	4.2	9	0.4	4	130	5.1	135	5.3	11	0.4	50	2.0	96	3.8	107	4.2	85	3.3	4	9.3
MVE 100/3E-10A0-M	MVE 100/36E-10A0-M	MVE 220/2E-10A0-M	A1	10A0	213	8.4	45	1.8	62-74 33	2.44-2.91 1.3	106	4.2	9	0.4	4	130	5.1	135	5.3	11	0.4	50	2.0	96	3.8	107	4.2	85	3.3	5	11.0
MVE 200/3E-20A0-M	MVE 200/36E-20A0-M	MVE 440/2E-20A0-M	B1	20A0	233	9.2	54	2.1	62-74	2.44-2.91	106	4.2	9	0.4	4	130	5.1	154	6.1	15	0.6	65	2.6	125	4.9	120	4.7	112	4.4	7	15.4
MVE 200/3E-23A0-M	MVE 200/36E-23A0-M	MVE 440/2E-23A0-M	G	23A0	222	8.7	55	2.2	62-74 65 115 135	2.44-2.91 2.6 4.5 5.3	106 140 135 115	4.2 5.5 5.3 4.5	9 13 11	0.4 0.5 0.4	4	164	6.5	140	5.5	25	1.0	82	3.2	116	4.6	159	6.3	110	4.3	7	16.0
MVE 300/3E-30A0-M	MVE 300/36E-30A0-M	MVE 690/2E-30A0-M	C1	30A0	254	10.0	42	1.7	62-74 80 90 124 135	2.44-2.91 3.1 3.5 4.9 5.3	106 110 125 110 115	4.2 4.3 4.9 4.3 4.5	9 13 11	0.4 0.4 0.5 0.4	4	150	5.9	173	6.8	15	0.6	79	3.1	150	5.9	166	6.5	134	5.3	10	21.6

This information is furnished without warranty, representation, inducement or license of any kind. It is accurate to the best OLI knowledge or is obtained from sources believed to be accurate. OLI therefore assumes no legal responsibility. The latest and most updated information are available online.



MVE THREE PHASE

MODEL			ELECTRICAL FEATURES																			
			WORKING MOMENT				CENTRIFUGAL FORCE				POWER				CURRENT		Ia/In		ClassII Div.2	II 2D	CABLE GLAND	
			Kgcm		inLb		Kg		Lb		kW		Hp		A max (Y)		50Hz	60Hz	Temp. Class	Temp. Class	IEC type	Class temp. °C
			50Hz	60Hz	50Hz	60Hz	50Hz	60Hz	50Hz	60Hz	50Hz	60Hz	50Hz	60Hz	400V (Y)	460V (Y)						
MVE 60/3E-10A0	MVE 60/36E-10A0	MVE 160/2E-10A0	1.3	1.0	1.14	0.85	66	71	146	157	0.09	0.09	0.12	0.12	0.25	0.23	3.2	3.2	T4	100	M16	80
MVE 100/3E-10A0	MVE 100/36E-10A0	MVE 220/2E-10A0	2.0	1.3	1.70	1.14	98	95	216	209	0.09	0.09	0.12	0.12	0.25	0.23	3.2	3.2	T4	100	M16	80
MVE 200/3E-20A0	MVE 200/36E-20A0	MVE 440/2E-20A0	3.7	2.6	3.23	2.27	187	189	412	417	0.15	0.18	0.20	0.24	0.35	0.30	3.5	3.5	T4	100	M20	80
MVE 200/3E-23A0	MVE 200/36E-23A0	MVE 440/2E-23A0	3.7	2.6	3.23	2.27	187	189	412	417	0.15	0.18	0.20	0.24	0.35	0.30	3.5	3.5	T4	100	M20	80
MVE 300/3E-30A0	MVE 300/36E-30A0	MVE 690/2E-30A0	6.4	4.5	5.55	3.87	321	323	708	712	0.25	0.28	0.34	0.38	0.52	0.45	3.8	3.7	T4	100	M20	80
MVE 400/3E-30A0	MVE 400/36E-30A0	MVE 890/2E-30A0	8.0	5.7	6.91	4.93	407	411	897	906	0.27	0.33	0.36	0.44	0.58	0.60	3.7	3.7	T4	100	M20	80
MVE 500/3E-40A0	MVE 500/36E-40A0	MVE 1200/2E-40A0	10.3	7.4	8.91	6.41	530	534	1168	1177	0.50	0.58	0.67	0.78	0.96	0.97	4.2	4.4	T4	135	M20	120
MVE 700/3E-40A0	MVE 700/36E-40A0	MVE 1700/2E-40A0	14.9	10.6	12.93	9.18	758	765	1671	1687	0.59	0.61	0.79	0.82	1.25	1.24	4.5	5.2	T4	135	M20	120
MVE 800/3E-50A0	MVE 800/36E-50A0	MVE 1800/2E-50A0	15.7	11.1	13.61	9.60	794	800	1750	1764	0.70	0.84	0.94	1.13	1.45	1.50	4.0	4.0	T4	135	M20	120

MVE SINGLE PHASE

MODEL			ELECTRICAL FEATURES																				
			WORKING MOMENT				CENTRIFUGAL FORCE				POWER				CURRENT			CAPACITOR			CLASSII DIV.2	II 2D	CABLE GLAND
			kgcm		inlb		kg		lb		kW		hp		A max			µF			Temp. Class	Temp. Class	Class
			50Hz	60Hz	50Hz	60Hz	50Hz	60Hz	50Hz	60Hz	50Hz	60Hz	50Hz	60Hz	50Hz	60Hz	60Hz	50Hz	60Hz	60Hz			
MVE 60/3E-10A0-M	MVE 60/36E-10A0-M	MVE 160/2E-10A0-M	1.3	1.0	1.1	0.9	66	71	145	156	0.08	0.09	0.11	0.12	0.43	0.43	1.03	3.0	3.0	6.3	T4	100	M16 80°
MVE 100/3E-10A0-M	MVE 100/36E-10A0-M	MVE 220/2E-10A0-M	2.0	1.3	1.7	1.1	98	95	216	209	0.10	0.11	0.13	0.15	0.54	0.54	1.30	4.0	4.0	8.0			
MVE 200/3E-20A0-M	MVE 200/36E-20A0-M	MVE 440/2E-20A0-M	3.7	2.6	3.2	2.3	187	189	412	417	0.18	0.21	0.24	0.28	1.14	1.14	2.62	8.0	8.0	16.0	T4	100	M20 80°
MVE 200/3E-23A0-M	MVE 200/36E-23A0-M	MVE 440/2E-23A0-M	3.7	2.6	3.2	2.3	187	189	412	417	0.18	0.21	0.24	0.28	1.14	1.14	2.62	8.0	8.0	16.0	T4	100	
MVE 300/3E-30A0-M	MVE 300/36E-30A0-M	MVE 690/2E-30A0-M	6.4	4.5	5.5	3.9	321	323	708	712	0.27	0.28	0.36	0.38	1.58	1.58	3.43	12.5	12.5	25.0	T4	100	

MVE - 2 POLES ELECTRIC VIBRATORS - THREE PHASE / SINGLE PHASE

APPLICATION	Hopper and silo - feeder - screen
POWDER	Fine - dry granular
PROBLEM SOLVING	Bridge and rat-holing

FEATURES

DUTY CYCLE	Continuous - S1
FREQUENCY RANGE	From 20Hz to 60Hz [with inverter]
ENVIRONMENT TEMPERATURE	From -20 °C to 40 °C (from -4 °F to 104 °F)
MAX NOISE LEVEL	76 dB(a)
ATEX	II3D Ex tc IIIC Tx IP66
MATERIAL	Aluminium body; aluminium (powder painted) cover

ACCESSORIES

CAPACITOR	Available
-----------	-----------

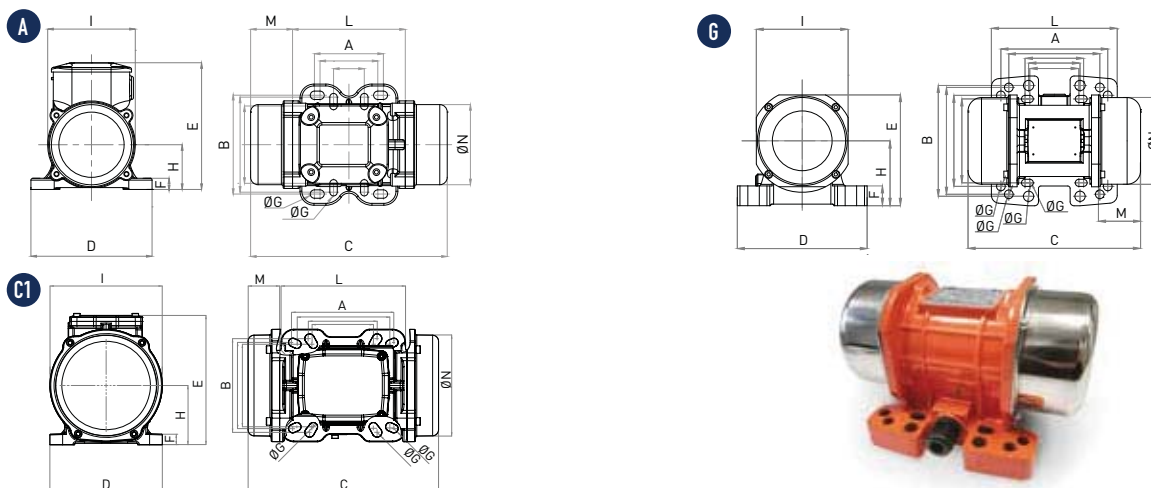
OPTIONS

ATEX	Ex II 2D Ex t IIIC Tx Db IP66 Ex tb IIIC Tx Db IP66
CUSTOMISED CABLE	Available





MVE-DC - Direct current electric vibrators



DIMENSIONAL SPECIFICATIONS

MODEL	DRAWING	SIZE	C		M		A		B		ØG		HOLES N°	D		E		F		H		I		L		N			
			mm	in	mm	in	mm	in	mm	in	mm	in		mm	in	mm	in	mm	in	mm	in	mm	in	mm	in	mm	in	mm	in
			50Hz	50Hz	50Hz	50Hz	mm	in	mm	in	mm	in		mm	in	mm	in	mm	in	mm	in	mm	in	mm	in	mm	in	mm	in
MVE 50/3N-10A0-12V	A	10A0	211	8.3	45	1.8	62-74	2.4-2.9	106	4.2	9	0.4	4	130	5.1	136	5.4	12	0.5	48	1.9	94	3.7	121	4.8	85	3.4		
MVE 50/3N-10A0-24V	A	10A0	211	8.3	45	1.8	33	1.3	83-102	3.3-4.0	7	0.3	4	130	5.1	136	5.4	12	0.5	48	1.9	94	3.7	121	4.8	85	3.4		
MVE 120/3N-23A0-12V	G	23A0	218	8.6	53	2.1	62-74	2.4-2.9	106	4.2	9	0.4	4	164	6.5	140	5.5	25	1.0	82	3.2	116	4.6	159	6.3	110	4.3		
MVE 120/3N-23A0-24V	G	23A0	218	8.6	53	2.1	65	2.6	140	5.5	13	0.5	4	164	6.5	140	5.5	25	1.0	82	3.2	116	4.6	159	6.3	110	4.3		
MVE 202/3N-23A0-12V	G	23A0	218	8.6	53	2.1	115	4.5	135	5.3	11	0.4	4	164	6.5	140	5.5	25	1.0	82	3.2	116	4.6	159	6.3	110	4.3		
MVE 202/3N-23A0-24V	G	23A0	218	8.6	53	2.1	135	5.3	115	4.5	11	0.4	4	164	6.5	140	5.5	25	1.0	82	3.2	116	4.6	159	6.3	110	4.3		
MVE 500/3N-40A0-24V	C1	40A0	330	13.0	78	3.1	105	4.1	140	5.5	13	0.5	4	170	6.6	196	7.7	15	0.6	92	3.6	174	6.8	166	6.9	160	6.3		
MVE 1500/3N-50A0-24V	C1	50A0	321	12.8	62	2.5	120	4.7	170	6.7	18	0.7	4	208	8.2	210	8.3	18	0.7	96	3.8	184	7.2	198	7.8	169	6.7		

ELECTRICAL SPECIFICATIONS

MODEL	RPM	WORKING MOMENT		CENTRIFUGAL FORCE		WEIGHT		POWER		MAX CURRENT A	EX II 3D Temp. Class [°C]	CABLE TYPE Class Temp	CABLE GLAND Class Temp
		kgcm	inlb	kg	lb	kg	lb	kW	Hp				
MVE 50/3N-10A0-12V	3000	1.02	0.89	50	110	4.4	9.7	0.08	0.11	3.3	100	2Gx1.5 90°C	M16 80 °C
MVE 50/3N-10A0-24V	3000	1.02	0.89	50	110	4.4	9.7	0.08	0.11	6.6	100	2Gx1.5 90°C	M16 80 °C
MVE 120/3N-23A0-12V	3000	1.10	1.86	117	258	7.2	15.9	0.12	0.15	4.8	100	2Gx1.5 90°C	M20 80 °C
MVE 120/3N-23A0-24V	3000	1.10	1.86	117	258	7.2	15.9	0.12	0.15	9.6	100	2Gx1.5 90°C	M20 80 °C
MVE 202/3N-23A0-12V	3000	4.17	3.62	200	441	7.2	15.9	0.16	0.21	6.7	100	2Gx1.5 90°C	M20 80 °C
MVE 202/3N-23A0-24V	3000	4.17	3.62	200	441	7.2	15.9	0.16	0.21	13.3	100	2Gx1.5 90°C	M20 80 °C
MVE 500/3N-40A0-24V	3000	10.40	9.03	530	1168	15.8	31.7	0.26	0.35	11.0	100	2Gx1.5 90°C	M20 80 °C
MVE 1500/3N-50A0-24V	3000	22.40	19.44	1616	3563	21.6	48.1	0.52	0.70	21.5	100	2Gx1.5 90°C	M20 80 °C

MVE-DC - DIRECT CURRENT ELECTRIC VIBRATORS

APPLICATION Dump truck - concrete pump - automotive hopper - salt spreader - dump trailer

POWDER Granular - Concrete

PROBLEM SOLVING Bridge and rat-holing

FEATURES

DUTY CYCLE Continuous - S1

ENVIRONMENT TEMPERATURE From -20 °C to 40 °C (from -4 °F to 104 °F)

MAX NOISE LEVEL 76 dB(a)

ATEX II 3D Ex tc III C Tx IP 66

MATERIAL Body aluminium - stainless steel /aluminium (powder painted) cover

OPTIONS

CUSTOMISED CABLE Available



This information is furnished without warranty, representation, inducement or license of any kind. It is accurate to the best OLI knowledge or is obtained from sources believed to be accurate. OLI therefore assumes no legal responsibility. The latest and most updated information are available online.



Dump truck



Concrete pump



Horizontal mobile silo



Concrete pump

EXTERNAL APPLICATION

HYDRAULIC VIBRATORS

PRODUCT SERIES

HYDRAULIC VIBRATOR
MVO 850



APPLICATIONS

Dump trucks
Agricultural
equipment
Digging buckets
Pipeline padder
equipment
Construction
equipment

POWDERS

**Hygroscopic,
wet, sticky and
granular powder**
Clay
Fertilizer
Manure
Sludge
Aggregates

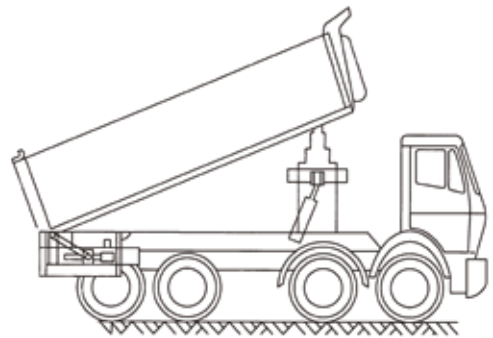
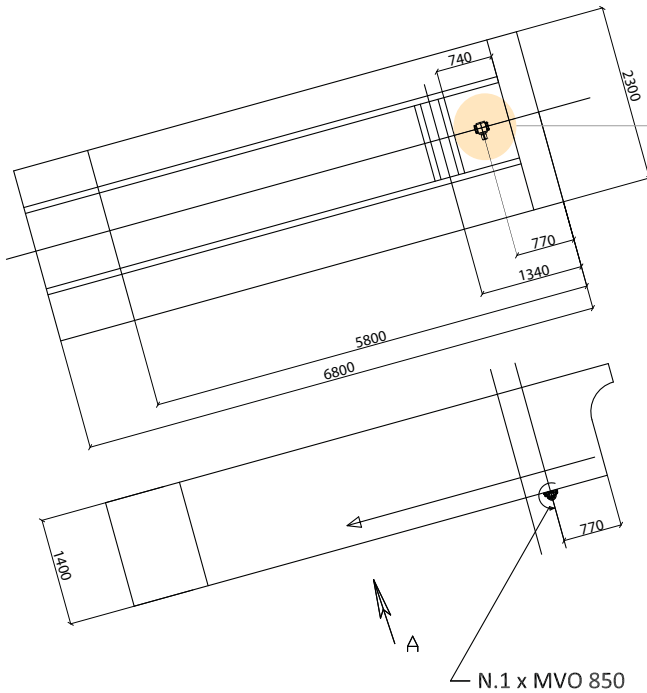
FEATURES

Continuous duty.
Working pressure
from 15 to 300
bar (from 217
to 4.350 PSI).
Working temperature
from -20 to 60 °C
(from -4 to 140 °F).
Max. noise level
80 dB(A).
Speed from 3.000
to 6.000 rpm.

BENEFITS

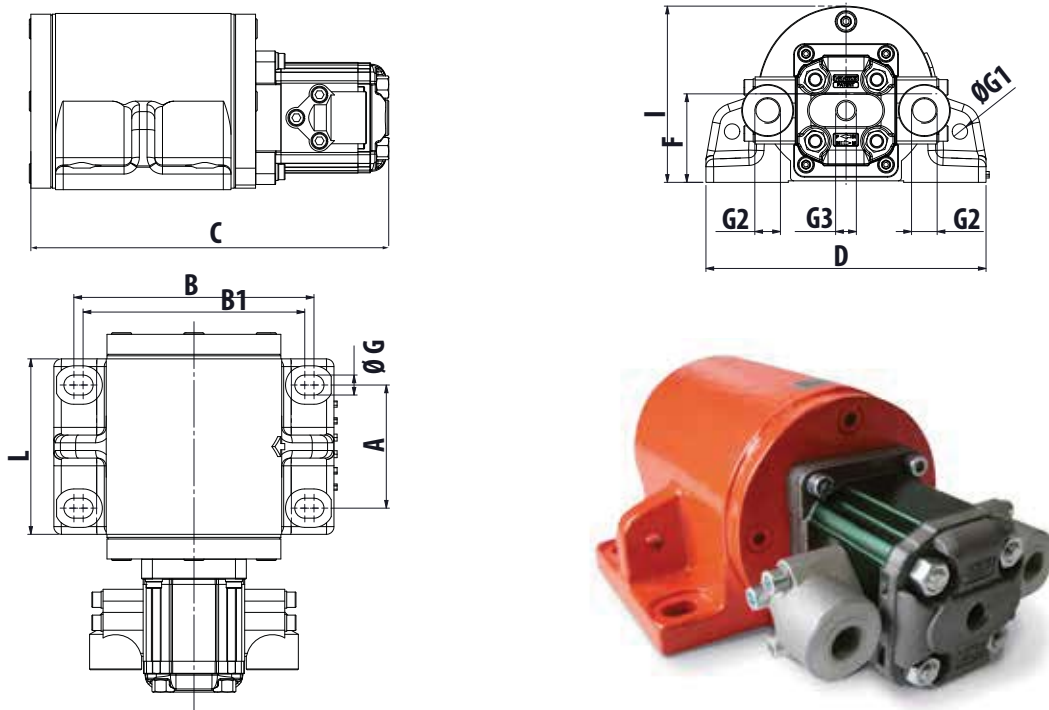
Robust
Safe
Easy to install
Compact design
High Force

APPLICATIONS





MVO - Hydraulic vibrators



DIMENSIONAL SPECIFICATIONS																									
A		B		B1		C		D		L		F		G		G1		G2		G3		I		Weight	
mm	in	mm	in	mm	in	mm	in	mm	in	mm	in	mm	in	mm	in	mm	in	mm	in	BSPP	BSPP	mm	in	kg	lb
80	3.2	156	6.1	144	5.7	233	9.2	182	7.2	115	4.5	58	2.3	13	0.5	10	0.4	3.8"	1/4"	114.5	4.50	11	24		

MECHANICAL FEATURES												
MODEL	CENTRIFUGAL FORCE				WORKING MOMENT		STATIC MOMENT		OPERATING PRESS.		MAX PRESSURE	
	3000 rpm		6000 rpm		kgcm	inlb	kgcm	inlb	bar		bar	
	kg	lb	kg	lb					3000 rpm	6000 rpm		
MVO 850	208	459	830	1830	4.12	3.57	2.06	1.78	70	120		

BEARING LIFE			
rpm	CENTRIFUGAL FORCE		BEARING LIFE
	kg	lb	hrs
3000	208	459	1,375.922
6000	830	1830	6,826

MVO - HYDRAULIC VIBRATORS

APPLICATION	Dump trailer - agriculture machine - digging bucket
POWDER	Hygroscopic - wet sticky and granular
PROBLEM SOLVING	Detaching

FEATURES

DUTY CYCLE	Continuous - S1
WORKING PRESSURE	From 15 bar to 300 bar (from 217 psi to 4.350 psi)
HYDRAULIC CIRCUIT	Flow control valve + filter (mesh 30-60 micron)
ENGINE SIZE	3.12 Cm ³ /round
WORKING TEMPERATURE	From -20 °C to 60 °C (from -4 °F to 140 °F)
OIL VISCOSITY	From 20 mm ² /sec to 100 mm ² /sec
OIL TYPE	HLP HV (D in 51524) hydraulic mineral oil
FLOW RATE	2,24 l/min (700 rpm) - 9,6 l/min (3.000 rpm) - 19,2 l/min (6.000 rpm)
MAX NOISE LEVEL	80 dB(a)
MOTOR TYPE	XV-1M/3.2
TECHNOLOGY	Hydraulic rotary vibrator
MATERIAL	Grey cast iron body (RAL 2004 powder painted)

This information is furnished without warranty, representation, inducement or license of any kind. It is accurate to the best OLI knowledge or is obtained from sources believed to be accurate. OLI therefore assumes no legal responsibility. The latest and most updated information are available online.